



**ITALIAN HARDWARE**



*ITALY*

## MADE IN ITALY..... what does it mean ???

From the post-World War II era, “Made in Italy” has confirmed itself as a label granting fine quality, authenticity and a sense of style internationally praised. A growing number of entrepreneurs managed through the decades to create a brand of high value all over the world, mixing the iconic Italian aesthetics with technology and innovation. The worth of the “Made in Italy” has granted many products prosperity in the markets, as it secured the solidity of the national economy.

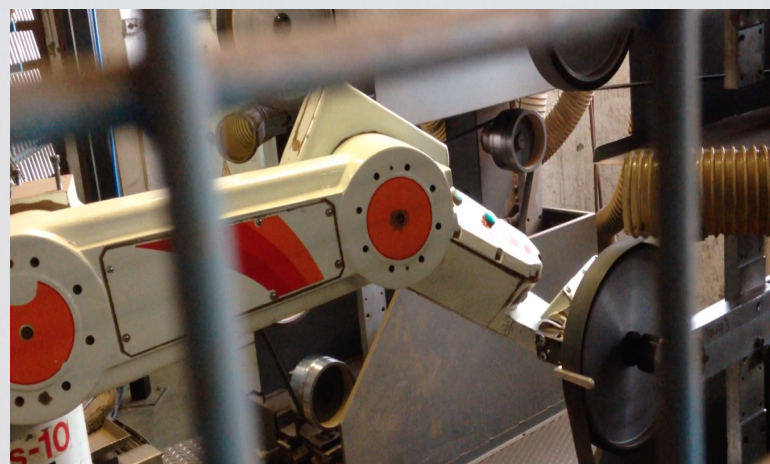
Historically “Made in Italy” was an English expression used by Italian manufacturers, especially from the 1980s onwards, as part of a process re-evaluation and defense of the Italianity product, in order to counter the falsification of the Italian artisan and industrial production, especially in the four traditional sectors of fashion, food, furniture and mechanics (cars, design and design, industrial machinery and ships), also known as

“Le quattro A/the 4 A”:

Clothing/**A**bbigliamento - **A**gro/food

Furniture/**A**rredamento and **A**utomobile

Abroad, in fact, Italian products had gained a reputation over time, with a corresponding commercial advantage. They were generally recognized for the average Italian product, or at least expected to have, remarkable craftsmanship, attention to detail, imagination of design and shape, durability. Italian products had historically been associated with quality, differentiation elegance and provenance from famous traditional Italian industrial sector.







**Product profile:**

Residential buildings.

**Features:**

- . Brass door handle on Decor rose
- . Lever handle length 148 mm
- . Square spindle 8x100 mm
- . With spring
- . **Colour:** French gold

**Options:**

- . Gold plated colour
- . Pewter colour
- . Patinè matt colour



**ISEO**

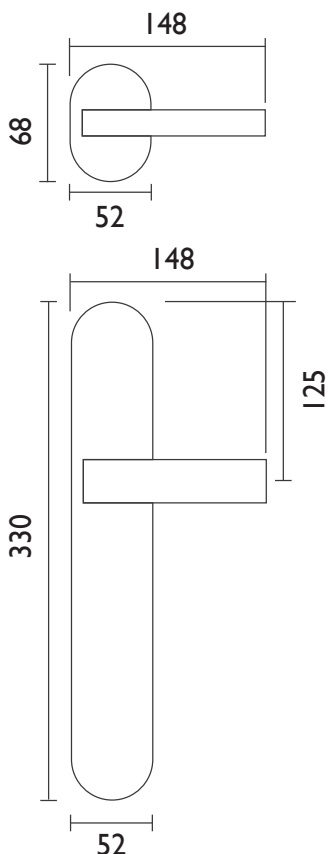
DH63.36.SB.56

**Features:**

- . Brass door handle on Liberty plate
- . Lever handle length 148 mm
- . Square spindle 8x100 mm
- . Plate 330x52 mm
- . With spring
- . **Colour:** French gold

**Options:**

- . Gold plated colour
- . Pewter colour
- . Patinè matt colour



DH63.70.09.56





**Product profile:**

Residential buildings.

**Features:**

- . Brass door handle on Nature rose
- . Lever handle length 130 mm
- . Square spindle 8x100 mm
- . With spring
- . **Colour:** Patinè matt

**Options:**

- . Gold plated colour
- . French gold colour



**IBIZA**

DH64.41.SB.57

**Features:**

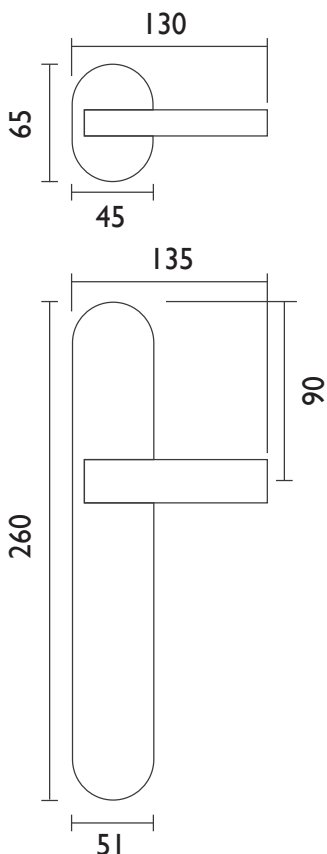
- . Brass door handle on Nature plate
- . Lever handle length 135 mm
- . Square spindle 8x100 mm
- . Plate 260x51 mm
- . With spring
- . **Colour:** Patinè matt

**Options:**

- . Gold plated colour
- . French gold colour



DH64.78.09.57





**Product profile:**

Residential buildings.

**Features:**

- . Brass door handle on Style rose
- . Lever handle length 145 mm
- . Square spindle 8x100 mm
- . With spring
- . **Colour:** French gold

**Options:**

- . Gold plated colour
- . Patiné matt colour
- . Pewter colour

# FIRENZE

DH24.38.SB.56



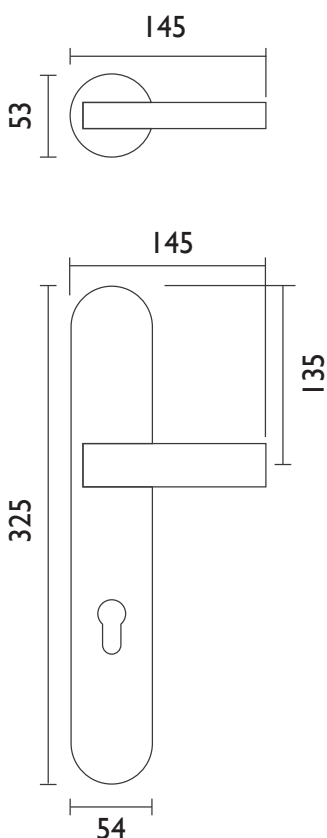
**Features:**

- . Brass door handle on Tiffany plate
- . Lever handle length 145 mm
- . Square spindle 8x100 mm
- . Plate 325x54 mm
- . With spring
- . **Colour:** French gold

**Options:**

- . Gold plated colour
- . Patiné matt colour
- . Pewter colour

DH24.79.06.56





**Product profile:**

Residential buildings.

**Features:**

- . Brass door handle on Style rose
- . Lever handle length 140 mm
- . Square spindle 8x100 mm
- . With spring
- . **Colour:** French gold

**Options:**

- . Gold plated colour
- . French silver colour
- . Patinè matt colour

# OPERA

DH62.38.SB56



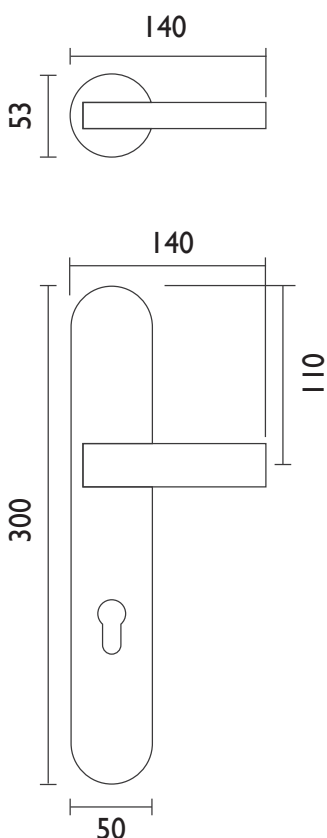
**Features:**

- . Brass door handle on Style plate
- . Lever handle length 140 mm
- . Square spindle 8x100 mm
- . Plate 300x50 mm
- . With spring
- . **Colour:** French gold

**Options:**

- . Gold plated colour
- . French silver colour
- . Patinè matt colour

DH62.73.06.56







**Product profile:**

Residential buildings.

**Features:**

- . Brass door handle on Decor rose
- . Lever handle length 140 mm
- . Square spindle 8x100 mm
- . With spring
- . **Colour:** Patinè matt

**Options:**

- . Gold plated colour
- . French gold colour



**NAPOLI**

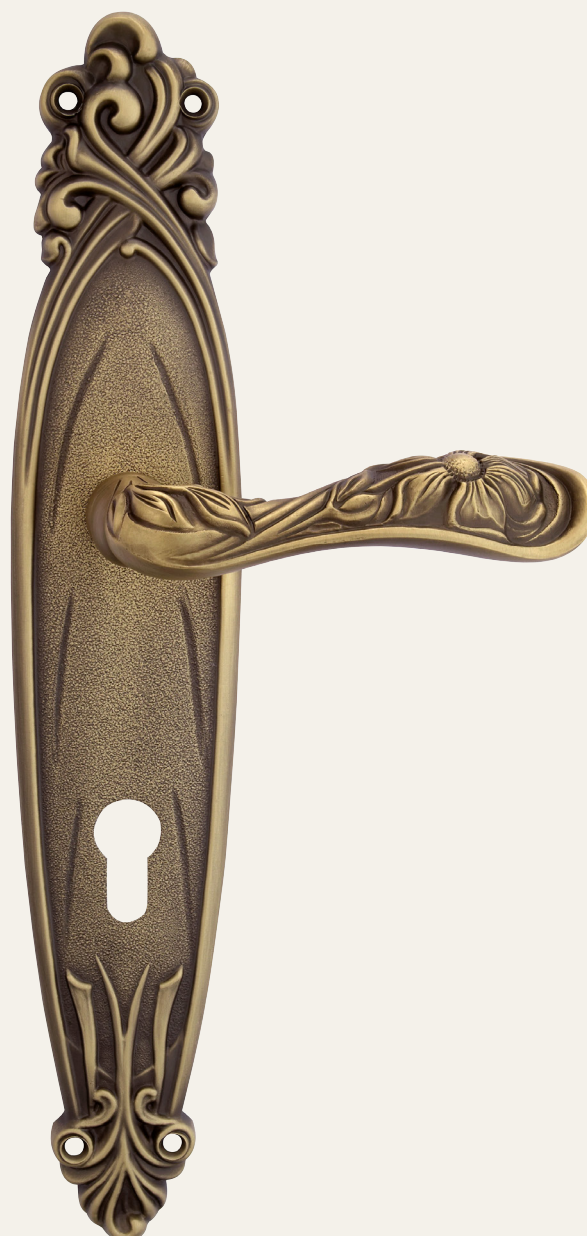
DH14.37.SB.57

**Features:**

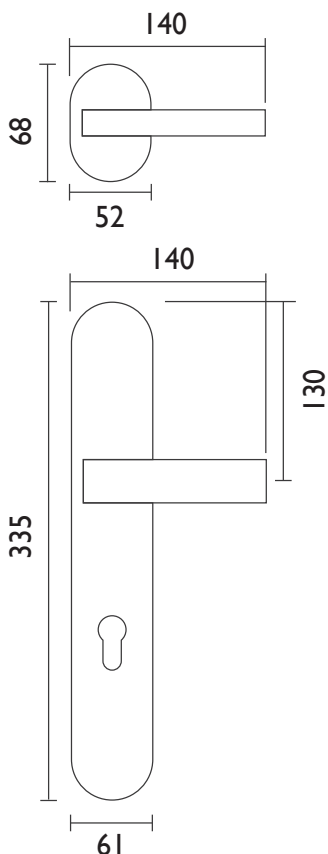
- . Brass door handle on Arte plate
- . Lever handle length 140 mm
- . Square spindle 8x100 mm
- . Plate 335x61 mm
- . With spring
- . **Colour:** Patinè matt

**Options:**

- . Gold plated colour
- . French gold colour



DH14.72.09.57





**Product profile:**

Residential buildings.

**Features:**

- . Brass door handle on style rose
- . Lever handle length 156 mm
- . Square spindle 8x100 mm
- . Square rose 50x50 mm
- . With spring
- . Metal under construction
- . **Colour:** Satin chrome

**Options:**

- . Polished chrome colour
- . Gold plated colour
- . Matt bronze colour

**AISHA**

DH66.23.SB.35



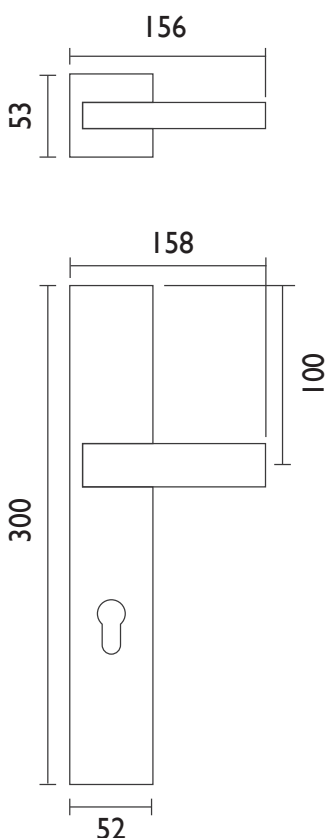
**Features:**

- . Brass door handle on style plate
- . Lever handle length 158 mm
- . Square spindle 8x100 mm
- . Plate 300x52 mm
- . With spring
- . **Colour:** Satin chrome

**Options:**

- . Polished chrome colour
- . Gold plated colour
- . Matt bronze colour

DH66.82.06.35





**Product profile:**

Residential buildings.

**Features:**

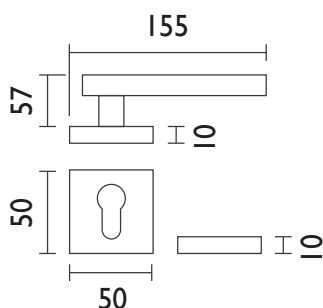
- . Lever handle length 155 mm
- . Projection 57 mm
- . Square spindle 8x100 mm
- . Square rose 50x50 mm
- . With spring
- . Metal under construction
- . **Colour:** Gold plated

**Options:**

- . Satin chrome colour
- . Polished chrome colour

# SAPHIR

DH68.23.SB.60



Brass door handle on square rose 50x50 mm

**Product profile:**

Residential - commercial buildings and administration centres.

**Features:**

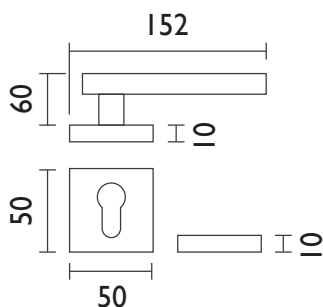
- . Lever handle length 152 mm
- . Projection 60 mm
- . Square spindle 8x100 mm
- . Square rose 50x50 mm
- . With spring
- . Metal under construction
- . **Colour:** Polished chrome

**Options:**

- . Satin chrome colour
- . Gold plated colour
- . Matt bronze colour
- . Patinè matt colour

# ACQUARIO

DH65.23.SB.34



Brass door handle on square rose 50x50 mm





**Product profile:**

Residential buildings.

**Features:**

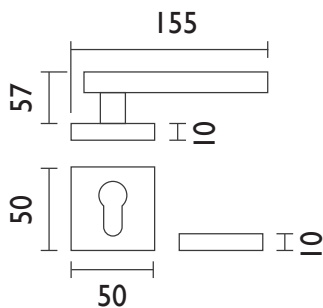
- . Lever handle length 155 mm
- . Projection 57 mm
- . Square spindle 8x100 mm
- . Square rose 50x50 mm
- . With spring
- . Metal under construction
- . **Colour:** Polished chrome /Satin chrome

**Options:**

- . Polished gold/Matt gold colour
- . Polished chrome colour
- . Gold plated colour
- . Satin chrome colour

# SERENA

DH20.23.SB.59



Brass door handle on square rose 50x50 mm

**Product profile:**

Residential - commercial buildings and administration centres.

**Features:**

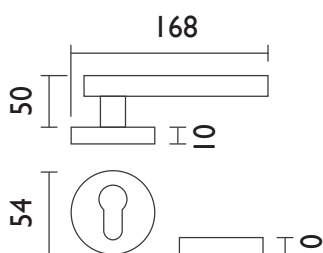
- . Lever handle length 168 mm
- . Projection 50 mm
- . Square spindle 8x100 mm
- . Round rose  $\varnothing$  54 mm
- . With spring
- . Metal under construction
- . **Colour:** Polished chrome /Satin chrome

**Options:**

- . Gold /Satin gold colour
- . Matt bronze colour

# ELEGANT

DH67.42.SB.59



Brass door handle on round screwed rose  $\varnothing$  54 mm



**Product profile:**

Residential buildings.

**Features:**

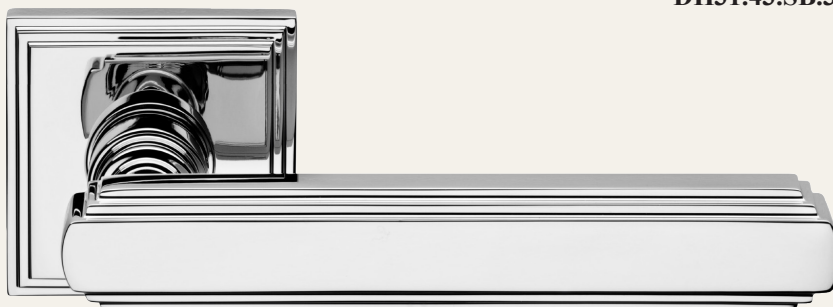
- . Brass door handle on square rose
- . Lever handle length 145 mm
- . Square spindle 8x100 mm
- . Square rose 53x53 mm
- . With spring
- . Metal under construction
- . **Colour:** Polished chrome

**Options:**

- . Polished brass colour
- . Gold plated colour
- . Polished nickel colour
- . Matt bronze colour

**AMELY**

DH31.43.SB.34



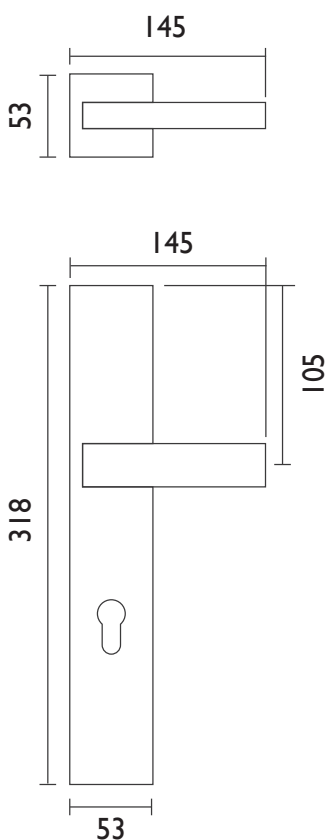
**Features:**

- . Brass door handle on plate
- . Lever handle length 145 mm
- . Square spindle 8x100 mm
- . Plate 318x53 mm
- . With spring
- . **Colour:** Polished chrome

**Options:**

- . Polished brass colour
- . Gold plated colour
- . Polished nickel colour
- . Matt bronze colour

DH31.81.09.34





**Product profile:**

Residential buildings.

**Features:**

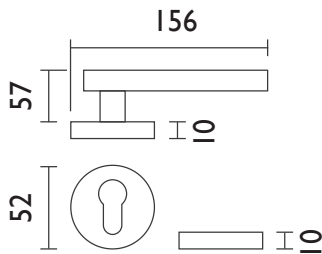
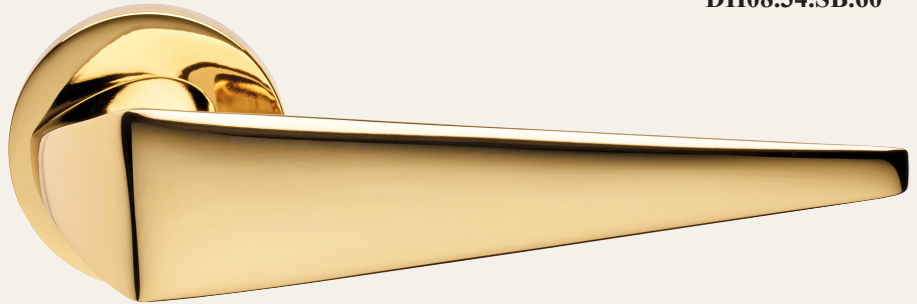
- . Lever handle length 156 mm
- . Projection 57 mm
- . Square spindle 8x100 mm
- . Round rose ø 52 mm
- . With spring
- . Metal under construction
- . **Colour:** Gold plated

**Options:**

- . Polished chrome colour
- . Satin chrome colour
- . Patinè matt colour

# LIONE

DH08.34.SB.60



Brass door handle on round rose ø 52 mm

**Product profile:**

Residential buildings.

**Features:**

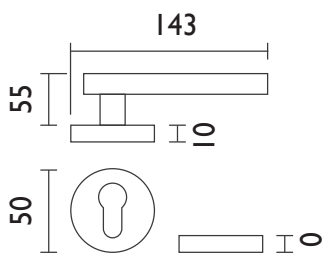
- . Lever handle length 143 mm
- . Projection 55 mm
- . Square spindle 8x100 mm
- . Round rose ø 50 mm
- . With spring
- . Metal under construction
- . **Colour:** Polished brass

**Options:**

- . Polished chrome colour
- . Satin chrome colour
- . Matt bronze colour
- . Patinè matt colour

# WAVE

DH23.24.SB.30



Brass door handle on round screwed rose ø 50 mm





**Product profile:**

Residential - commercial buildings  
and administration centres.

**Features:**

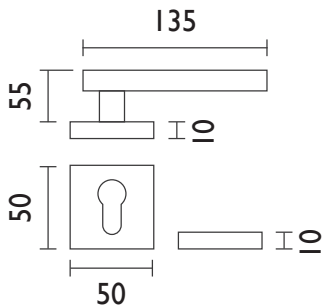
- . Lever handle length 135 mm
- . Projection 55 mm
- . Square spindle 8x100 mm
- . Square rose 50x50 mm
- . With spring
- . **Colour:** Satin chrome

**Options:**

- . Round rose  $\varnothing$  50 mm
- . With spring

# VENEZIA

DH11.23.YA.35



Zinc alloy door handle on pressured unassembled square rose 50x50 mm

**Product profile:**

Residential - commercial buildings  
and administration centres.

**Features:**

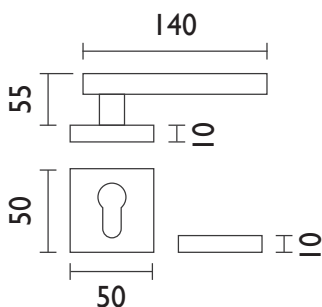
- . Lever handle length 140 mm
- . Projection 55 mm
- . Square spindle 8x100 mm
- . Square rose 50x50 mm
- . With spring
- . **Colour:** Satin chrome

**Options:**

- . Round rose  $\varnothing$  50 mm
- . With spring

# VICENZA

DH12.23.YA.35



Zinc alloy door handle on pressured unassembled square rose 50x50 mm



**Product profile:**

Residential - commercial buildings  
and administration centres.

**Features:**

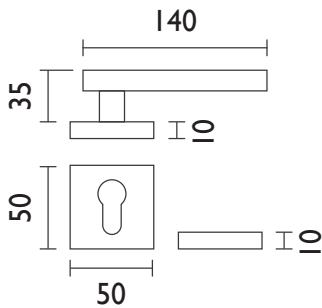
- . Lever handle length 140 mm
- . Projection 35 mm
- . Square spindle 8x100 mm
- . Square rose 50x50 mm
- . With spring
- . **Colour:** Satin chrome

**Options:**

- . Round rose ø 50 mm
- . With spring
- . Matt black colour

# MILANO

DH01.23.YA.35



Zinc alloy door handle on pressured unassembled square rose 50x50 mm

**Product profile:**

Residential - commercial buildings  
and administration centres.

**Features:**

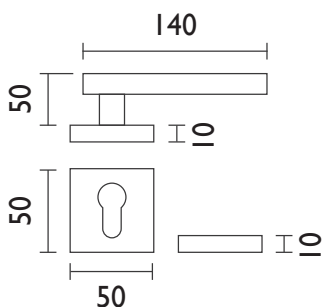
- . Lever handle length 140 mm
- . Projection 50 mm
- . Square spindle 8x100 mm
- . Square rose 50x50 mm
- . With spring
- . **Colour:** Satin chrome

**Options:**

- . Round rose ø 50 mm
- . With spring
- . Matt black colour

# TORINO

DH02.23.YA.35



Zinc alloy door handle on pressured unassembled square rose 50x50 mm



**Product profile:**

Residential - commercial buildings  
and administration centres.

**Features:**

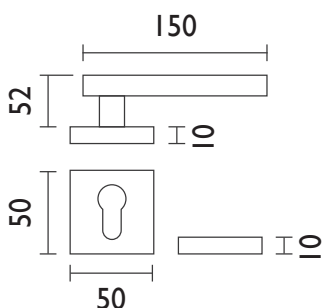
- . Lever handle length 150 mm
- . Projection 52 mm
- . Square spindle 8x100 mm
- . Square rose 50x50 mm
- . With spring
- . **Colour:** Satin chrome

**Options:**

- . Round rose  $\varnothing$  50 mm
- . With spring

# GENOVA

DH05.23.YA.35



Zinc alloy door handle on pressured unassembled square rose 50x50 mm

**Product profile:**

Residential - commercial buildings  
and administration centres.

**Features:**

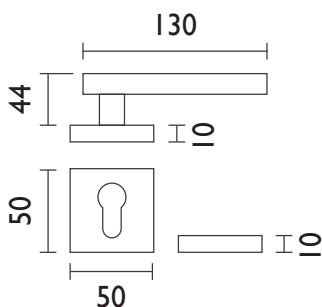
- . Lever handle length 130 mm
- . Projection 44 mm
- . Square spindle 8x100 mm
- . Square rose 50x50 mm
- . With spring
- . **Colour:** Satin chrome

**Options:**

- . Polished chrome colour

# PISA

DH06.23.YA.35



Zinc alloy door handle on pressured unassembled square rose 50x50 mm





## Product profile:

Residential and public buildings.

## Features:

- . UNE-EN 1670:2007
- . Corrosion Grade 5
- . Stainless Steel 304
- . With spring, 8 mm. spindle

## Other finishes:

- . Polished Stainless Steel
- . PVD

## Options:

- . Satin Stainless Steel 316



**DHG01Q38**

## Product profile:

Residential and public buildings.

## Features:

- . According to BS EN 1935 grade 13
- . Load capacity 120 Kg
- . Suitable for fire and smoke doors up to 240 min tested by intertek
- . Material satin stainless steel 304
- . 200.00 cycles tested, different sizes
- . All sizes available

## Finish:

- . Satin stainless steel

## Options:

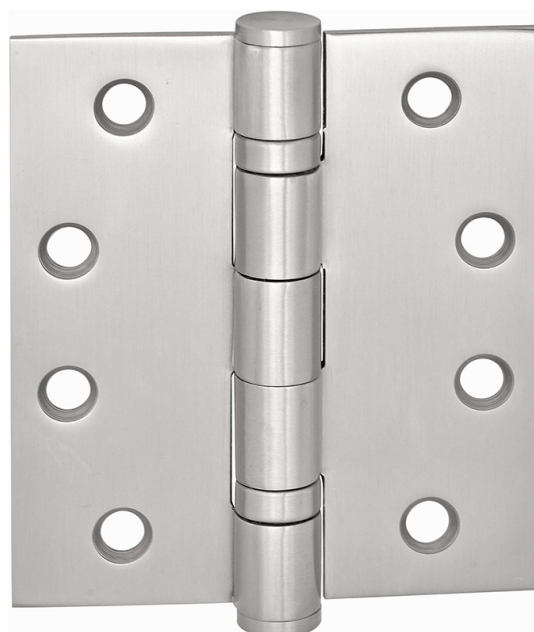
- . SUS 316

**Quality and performance:** Successfully type tested to all the requirements of BS EN12209:2003

4	7	6	1	1	4	1	13
---	---	---	---	---	---	---	----



**Fire safety:** Included in a successful fire test to EN 1634 Part. 1 Assessed for use on 30, 60 , 90 and 120 minutes timber fire doors and 240 minutes on steel fire doors\*.



**DHG11Q38**



## Product profile:

For residential, commercial and public buildings.

## Features:

- . According to EN 12209- Grade3
- . Centres: 72 PZ
- . Backset: 55 mm
- . For wooden or steel doors
- . Suitable for external fire and smoke doors
- . SSS-304-Forend and striking plates available square or radiused
- . Width: 24 mm
- . Forend thickness: 3 mm strike plate 1,5 mm
- . SS: 8 mm follower
- . Reversible nickel plated steel latch left/right
- . Double throw nickle plated dead bolt
- . Pierced to accept bolt through fixing rosette 38 mm

## Supplied as standard:

- . Strike plate, fixing screws for lock and strike plate and white box for strike plate

## Finish:

- . Satin Stainless Steel

## Options:

- . Polished brass front/strike plated MOQ 500 pcs
- . Backset : 60-65 mm MOQ 1000 pcs

**Quality and performance:** Successfully tested to all the requirements of EN 1634-1:2014

3	X	9	1	0	G	3	B	C	2	0
---	---	---	---	---	---	---	---	---	---	---

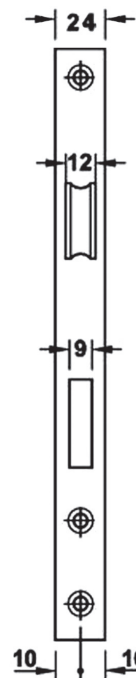
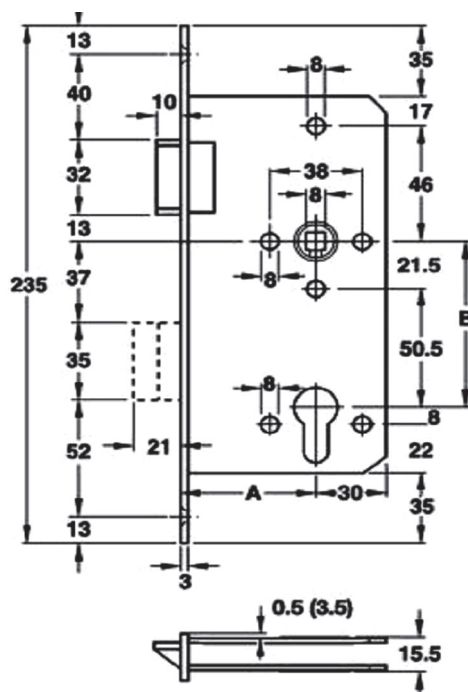


**Fire safety:** Included in a successful fire test to EN 1634 Part. 1 Assessed for use on 30, 60 , 90 and 120 minutes timber fire doors and 240 minutes on steel fire doors.

**CE** CE marked to EN 12209:2003/AC:2005



**LK72Q0338**





## Product profile: Security cylinder

Commercial and public buildings.

### Features:

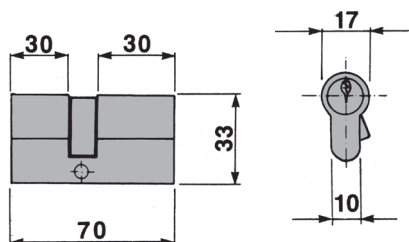
- . Euro profile double cylinder
- . 6 pins key biting system
- . Flat reversible key
- . Sintered steel cam self-lubricating
- . Supplied as standard: 5 keys and fixing screw
- . EN 1303:2005 Attack resistance grade 0,
- . Key related security grade 4, Durability grade 6
- . Sizes: 60-65-70-75-80

### Finish:

- . MSN
- . Bronze

### Options:

- . Other colours and sizes on request



**CY82HS0637**

## Product profile: high security cylinder:

Commercial and public buildings.

### Features:

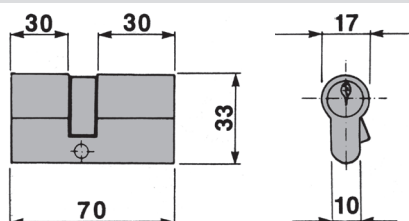
- . Ownership certificate
- . Euro profile double cylinder
- . 10 pins key biting system
- . Stainless steel anti snap bar in cylinder body
- . Sintered steel cam self-lubricating
- . Push-drill resistance: one hardened steel pin into both cylinder body sides
- . Picking resistant: special shape of the drivers
- . EN 1303: grade 6 durability, grade 3 security
- . 63000 different cylinders per MK
- . Sizes: 60-65-70-75-80

### Finish:

- . MSN
- . Bronze

### Options:

- . Other colours and sizes on request



**CY82HS1037**



## Product profile:

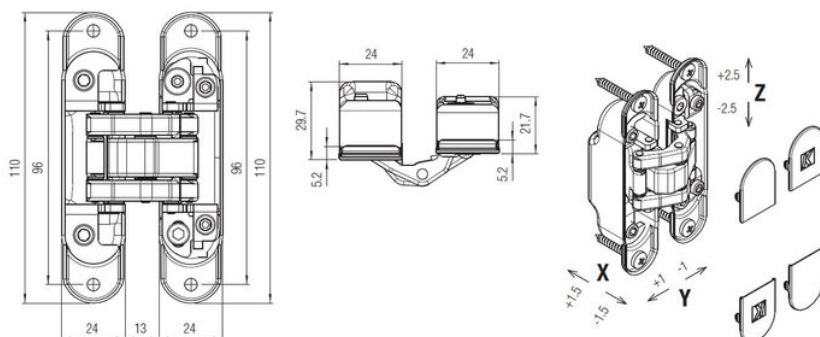
Residential buildings.

## Features:

- High resistance steel material
- Durability compliant EN1911-2013 IFT Institute
- UL - ULC Listed
- Fire rated UNI EN 1634-1:2018 30 - 45 min.
- Minimum door thickness 32 mm
- Load capacity up to 60 Kg. 2 hinges
- 3D adjustable U/D +2,5-2,5; L/R +1,5-1,5; IN/OUT +1-1 mm
- Opening angle 180°
- For wooden steel or Aluminum frames

## Finish:

- Satin chrome . Polished chrome . White
- Satin nickel . Polished brass . Matt black
- Satin bronze . Polished gold . Brushed bronze



**CHGK6135**

## Product profile:

Residential buildings.

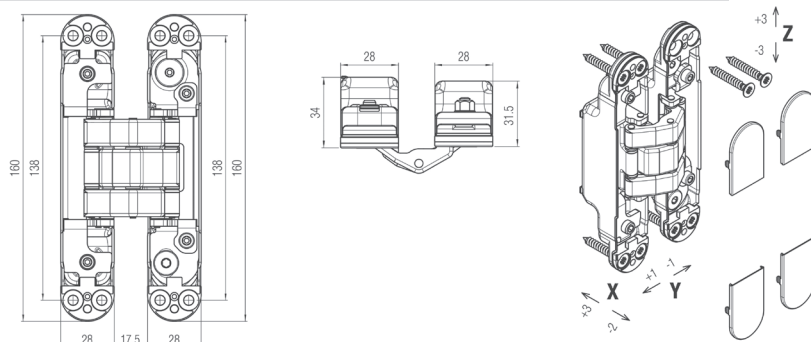


## Features:

- High resistance steel material
- EAD 020001-01-405 compliant - IFT Institute
- UL - ULC Listed
- Fire rated BS 476-22: 120 min.
- Fire rated UNI EN 1634-1:2018 60-120 min.
- Minimum door thickness 36 mm
- Load capacity up to 80 Kg. 2 hinges - 100 Kg. 3 hinges
- 3D adjustable U/D +3-3; L/R +3-2; IN/OUT +1-1 mm
- Opening angle 180°
- For wooden steel or Aluminum frames

## Finish:

- Satin chrome . Polished chrome . White
- Satin nickel . Polished brass . Matt black
- Satin bronze . Polished gold . Brushed bronze



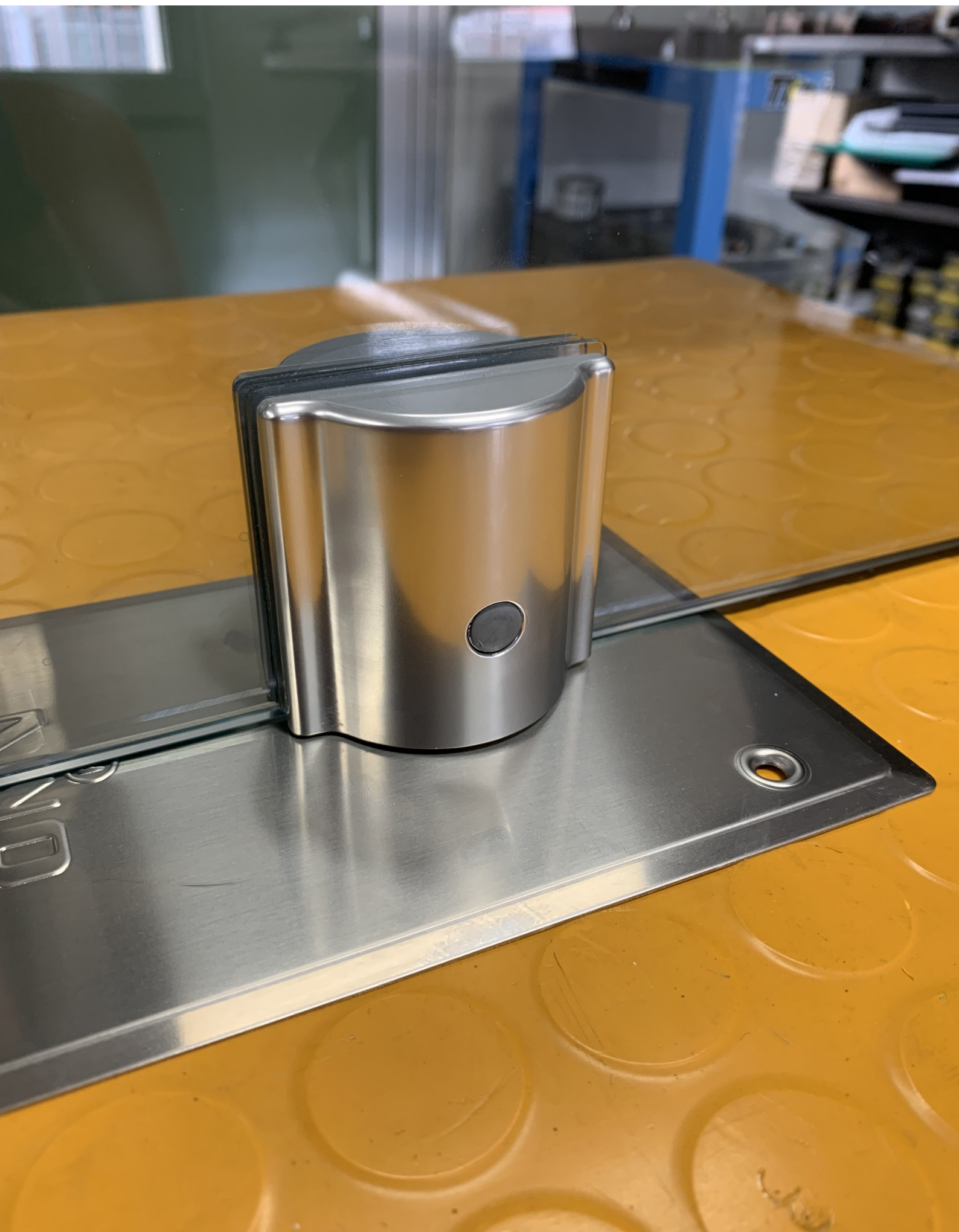
**CHGK6235**



Made in Italy



O.M.V. since 1959





### Product profile:

Commercial and public buildings.

### Features:

- . Panic device with locking point
- . Reversible SS latch
- . 1-2 or 3 locking point
- . Steel finish special painting
- . EN 1125:2008 CE Marked
- . Fire rated up to 120 min.
- . 200.000 cycles tested
- . High corrosion resistance
- . Load capacity over 200 Kg

### Finish:

- . Satin chrome
- . Black
- . White
- . Grey
- . SS-effect
- . Black/green
- . Black/red

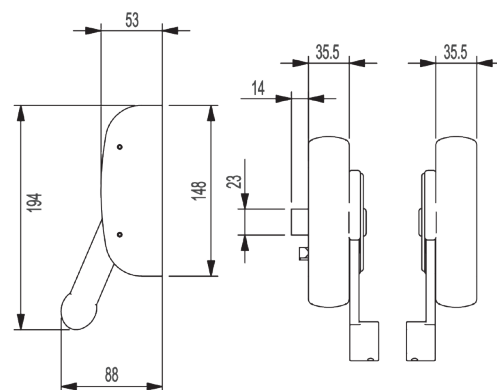
### Options:

- . Electric module 12V. AC-DC-1A



**Quality and performance:** Successfully tested to all the requirements of UNI EN 1634-1:2009/EC:2010

3	7	7	B	1	4	2	2	A	A
---	---	---	---	---	---	---	---	---	---



**PDPB1051**

### Product profile:

Commercial and public buildings.

### Features:

- . Panic device with locking point
- . Reversible SS latch
- . 1-2 or 3 locking point
- . Steel finish special painting
- . EN 1125:2008 CE Marked
- . Fire rated up to 120 min.
- . 200.000 cycles tested
- . High corrosion resistance
- . Load capacity over 200 Kg

### Finish:

- . Satin chrome
- . Black
- . White
- . Grey
- . SS-effect
- . Black/green
- . Black/red

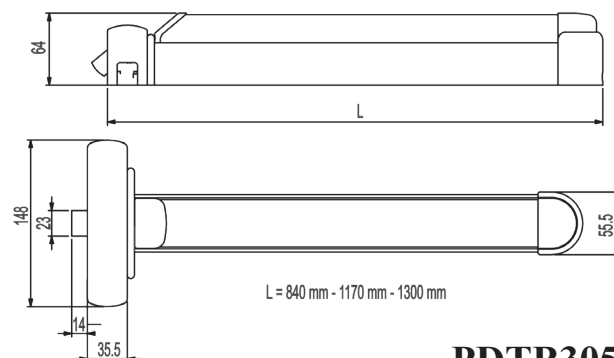
### Options:

- . Electric touch bar 12V. AC-DC-1A



**Quality and performance:** Successfully tested to all the requirements of UNI EN 1634-1:2009/EC:2010

3	7	7	B	1	4	2	2	B	A
---	---	---	---	---	---	---	---	---	---



**PDTB3051**





**Product profile:**

Residential buildings.

**Features:**

- . Bi-Color Brass knob
- . Size:  $\varnothing$  60 mm
- . Rosette size:  $\varnothing$  65 mm
- . Projection: 68 mm
- . **Colour:** Polished chrome/Matt chrome mix

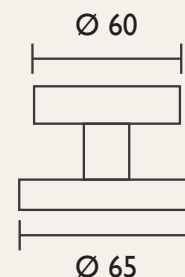
**Options:**

- . Matt bronze colour
- . Polished gold/Matt gold mix colour



## ELEGANT

KN12.60.WR.59



**Product profile:**

Residential buildings.

**Features:**

- . Brass knob
- . Size: 55x55 mm
- . Rosette size: 53x53 mm
- . Projection: 58 mm
- . **Colour:** Polished chrome

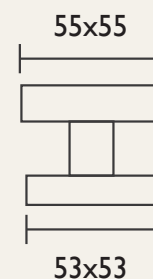
**Options:**

- . Polished brass colour
- . Gold plated colour
- . Polished nickel colour



## AMELY

KN14.55.WR.34



**Product profile:**

Residential buildings.

**Features:**

- . Brass knob
- . Size: 65x65 mm
- . Rosette size: 85x65 mm
- . Projection: 52 mm
- . **Colour:** Patinè matt

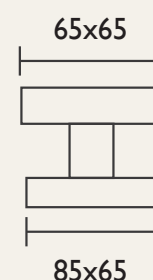
**Options:**

- . French gold colour
- . Gold plated colour
- . Pewter colour



## FIRENZE

KN16.65.WR.57





**Product profile:**

Residential buildings.

**Description:**

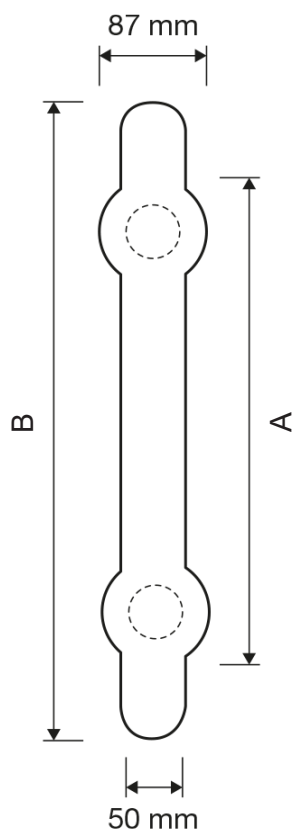
Old style pull handle, made in forged brass and turned brass bar.  
Available in different sizes.

**Features:**

- . Brass door pull handle
- . Length 1600 mm
- . Center to center 1196 mm
- . Projection: 87 mm
- . Tube diam. 50 mm
- . **Colour:** Patinè matt

**Options:**

- . French gold colour
- . Gold plated colour



CODE	A	B
C4	596	1000
C5	796	1200
C6	896	1300
C7	1196	1600

# NAPOLI

PH09.C4.NR.57







**Product profile:**

Residential buildings.

**Description:**

Simple figures of evident Liberty inspiration seem to come to life and evolve naturally into shapes similar to plants and flowers.

**Features:**

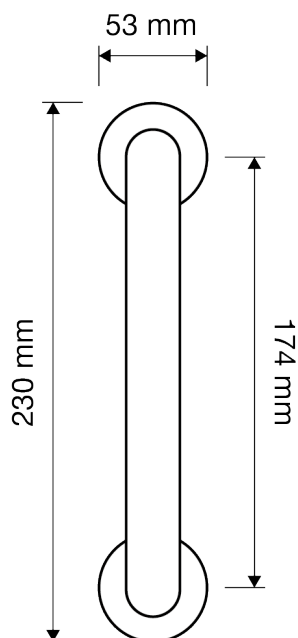
- . Brass door pull handle
- . Length 230 mm
- . Center to center 174 mm
- . Projection: 53 mm
- . **Colour:** French gold

**Options:**

- . Gold plated colour
- . Patiné matt colour

**ISEO**

PH03.C8.WR.56





**Product profile:**

Residential buildings.

**Description:**

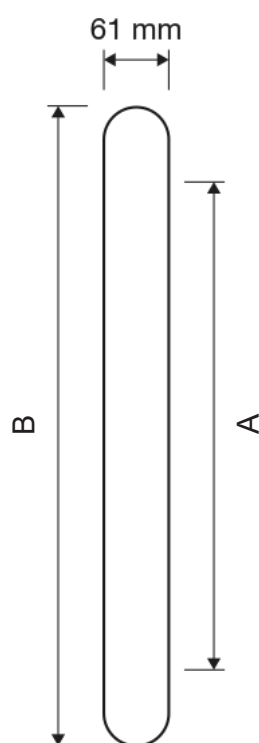
A triumph of fine floral arabesques characterizes this particularly elegant collection of clear inspiration from Louis XIV.  
Available in different sizes.

**Features:**

- . Brass door pull handle
- . Length 871 mm
- . Center to center 800 mm
- . Projection: 61 mm
- . **Colour:** Gold plated

**Options:**

- . French gold colour
- . French black colour
- . Patinè matt colour



CODE	A	B
B4	400	471
B5	500	571
B6	600	671
B7	700	771
B8	800	871

# LIVORNO

PH08.B8.NR.60





**Product profile:**

For residential, commercial and public buildings.

**Standard version:**

- . Satin Stainless Steel 304 material
- . Bolt or back to back fixing system
- . Different lenght
- . Wide range of mounting option
- . For aluminium ,wooden or glass doors
- . Suitable for internal or external doors
- . By set version comes with fixing accessories
- . Thickness: 1,5 mm
- . 45° or 90° fixing system

**Finish:**

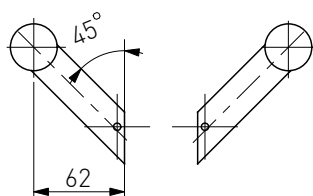
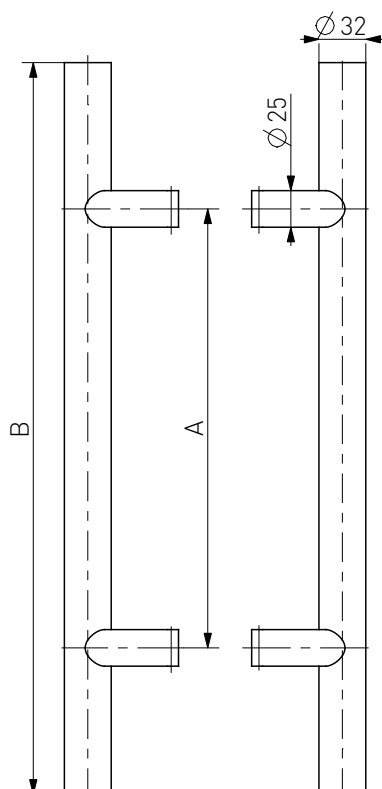
- . Satin Stainless Steel

**Options:**

- . 316 Stainless steel
- . Polished stainless steel



**PH03A238**



CODE	A	B
A1	300	500
A2	450	650
A3	600	800
A6	1200	1400
A8	1300	1800



## Product profile:

For residential, commercial and public buildings.

## Standard version:

- . Satin Stainless Steel 304 material
- . Bolt or back to back fixing system
- . Different lenght
- . Wide range of mounting option
- . For aluminium ,wooden or glass doors
- . Suitable for internal or external doors
- . By set version comes with fixing accessories
- . Thickness: 1,5 mm
- . 45° or 90° fixing system

## Finish:

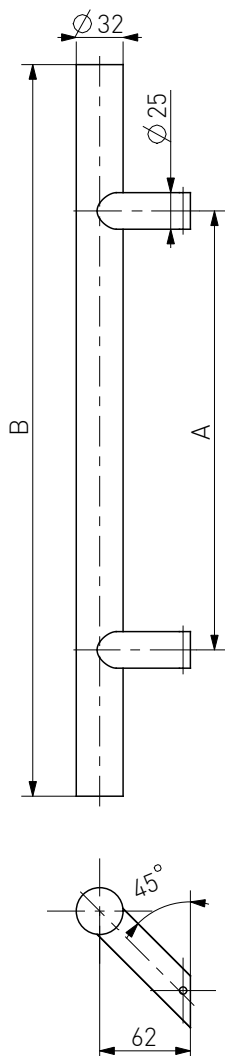
- . Satin Stainless Steel

## Options:

- . 316 Stainless steel
- . Polished stainless steel



**PH01A238**



CODE	A	B
A1	300	500
A2	450	650
A3	600	800
A6	1200	1400
A8	1300	1800





## Product profile:

For residential, commercial and public buildings.

## Standard version:

- . Satin Stainless Steel 304 material
- . Bolt or back to back fixing system
- . Different lenght
- . Wide range of mounting option
- . For aluminium ,wooden or glass doors
- . Suitable for internal or external doors
- . By set version comes with fixing accessories
- . Thickness: 1,5 mm
- . 45° or 90° fixing system

## Finish:

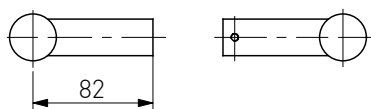
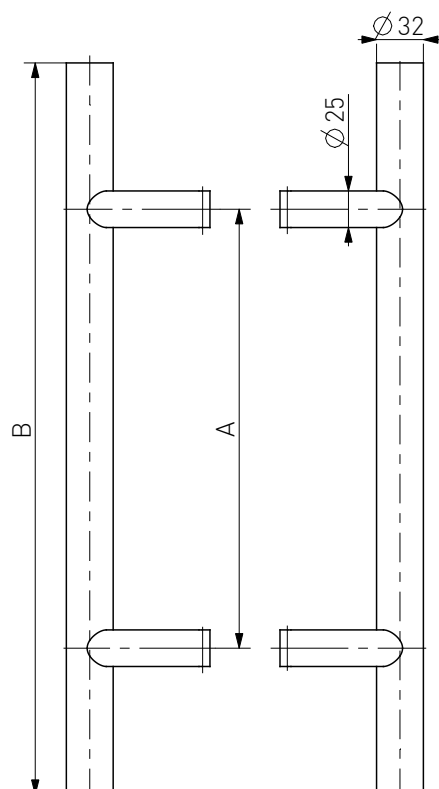
- . Satin Stainless Steel

## Options:

- . 316 Stainless steel
- . Polished stainless steel



**PH04A238**



CODE	A	B
A1	300	500
A2	450	650
A3	600	800
A6	1200	1400
A8	1300	1800

## Product profile:

Residential, public and commercial buildings.

## Features:

- . Lever handle length 140 mm
- . Projection 65 mm
- . Square spindle 8x100 mm
- . Round rose ø 50 mm
- . With spring
- . SUS 304 material
- . **Colour:** Satin Stainless Steel

## Options:

- . SUS 316 material

## Quality and performance:

Successfully type tested to all the requirements of BS EN12209:2003

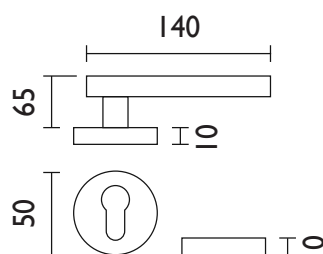
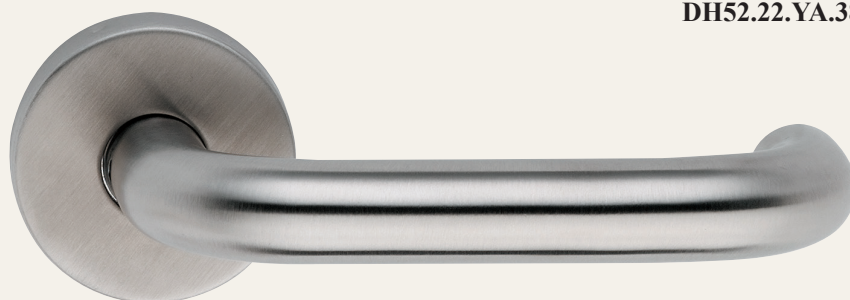
4	7	-	B	1	4	0	B
---	---	---	---	---	---	---	---



**Fire safety:** Included in a successful fire test to EN 1634 Part. 1 Assessed for use on 30, 60, 90 and 120 minutes timber fire doors and 240 minutes on steel fire doors.

## OMAN

DH52.22.YA.38



Inox door handle on pressured unassembled round rose ø 50 mm

## Product profile:

Residential, public and commercial buildings.

## Features:

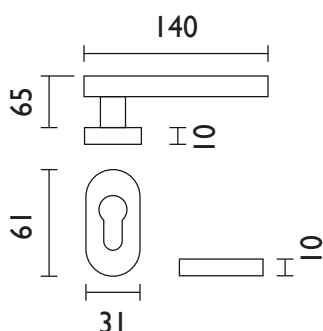
- . Lever handle length 140 mm
- . Projection 65 mm
- . Square spindle 8x100 mm
- . Oval rose 61x31 mm
- . With spring
- . SUS 304 material
- . **Colour:** Satin Stainless Steel

## Options:

- . SUS 316 material

## OMAN-OV

DH52.32.YA.38



Inox door handle on unassembled oval rose 31x61 mm



## Product profile:

For residential, commercial and public buildings.

## Features:

- . Overhead door closer
- . Power EN2/EN3/EN4 selectable
- . Door width <1050 mm
- . Door weight 20-85 Kg.
- . Backcheck optional
- . CE and Certifire Tested
- . EN 1154- BS EN 1634-1
- . Fire rated up to 120 min. timber doors and 240 metal doors

## Standard finish:

- . Silver, other colour on request



**OHDC012461**

## Product profile:

For residential, commercial and public buildings.

## Features:

- . Overhead door closer
- . Power EN4/EN5 selectable
- . Door width <1200 mm
- . Door weight 25-100 Kg
- . For aluminium, wooden or metal doors
- . Meet CE require
- . Size: 226Lx48Hx60W mm

## Standard finish:

- . Silver, other colour on request



**OHDC032561**



## Product profile:

For residential, commercial and public buildings.

## Features:

- . Overhead door closer
- . Power EN3-6 adjustable by spring
- . Door width <1500 mm
- . Door weight 40-150 Kg.
- . Backcheck/delayaction optional
- . CE and Certifire Tested  
EN 1154- BS EN 1634-1
- . Fire rated up to 120 min.  
timber doors and 240 metal doors

## Standard finish:

- . Silver, other colour on request



**OHDC053461**

## Product profile:

For residential, commercial and public buildings.

## Features:

- . Overhead door closer
- . Power EN4/EN5 selectable
- . Door width <1050 mm
- . Door weight 20-85 Kg
- . Backcheck optional
- . Meet CE require
- . CE and Certifire Tested  
EN 1154- BS EN 1634-1
- . Fire rated up to 120 min.  
timber doors and 240 metal doors

## Standard finish:

- . Silver, other colour on request



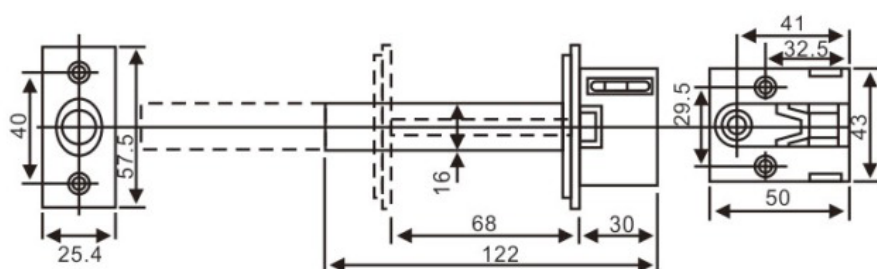
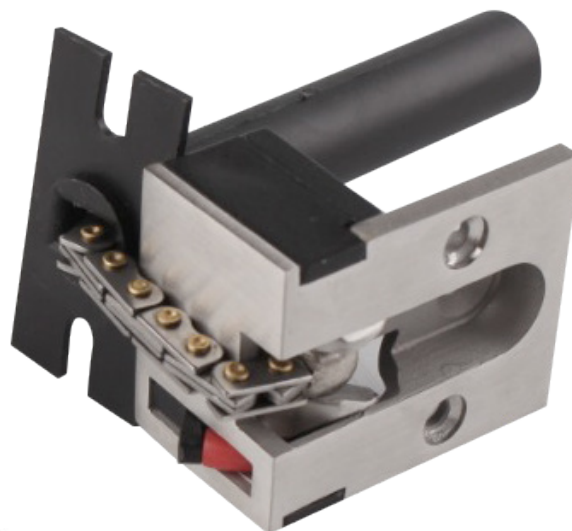
**OHDC072361**



## Security chain:

### Standard verison:

- . Concealed door chain in SSS finish

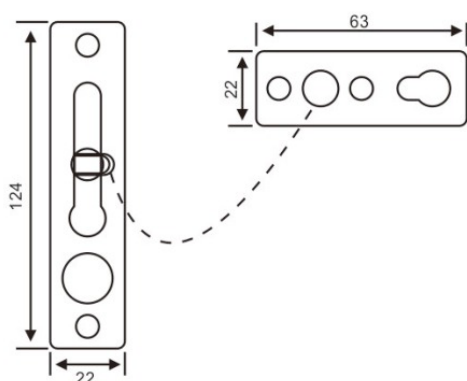


**SCH7038**

## Security chain:

### Product profile:

- . Hotels and private buildings
- . Satin Stainless Steel finish

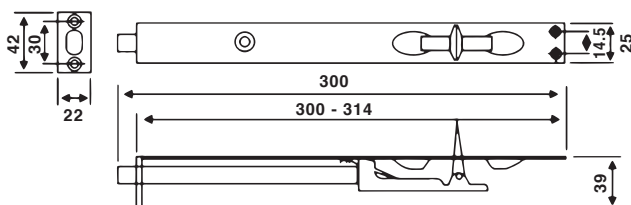


**SCH5038**

## Flush bolt:

### L-Shape flush bolt:

- . Suitable for timber or metal doors
- . SUS 304 Satin Stainless Steel
- . Width: 25 mm - 39 mm deep
- . Different lenght: 200 - 250 - 300 mm
- . Supplied with screws

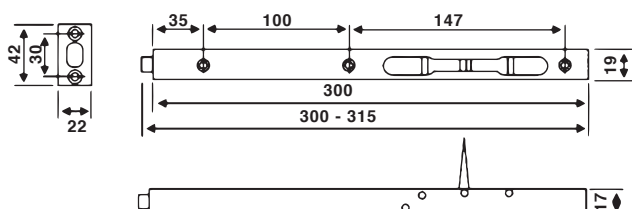


**FB010138**

## Flush bolt:

### Boxed type flush bolt:

- . For timber doors
- . Width: 19 mm
- . SUS 304 material
- . Different lenght: 200 - 250 - 300 mm
- . Supplied with screws

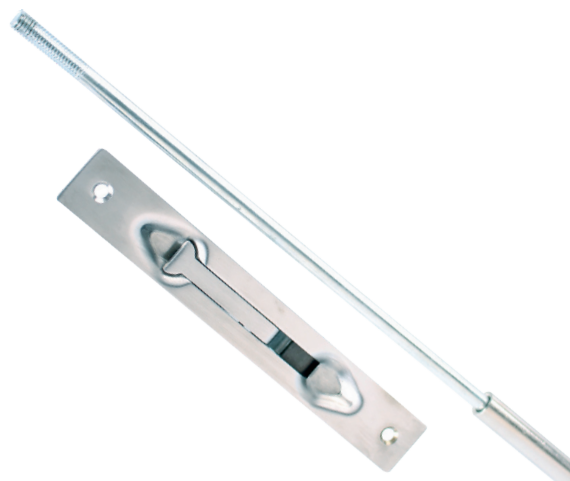
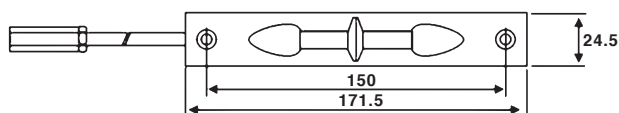


**FB030138**

## Flush bolt:

### Semi concealed flush bolt:

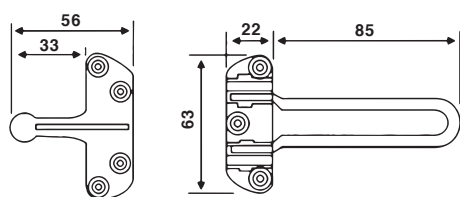
- . SUS 304 lever action extensions flush bolt
- . Width: 25 mm
- . For metal doors or timber doors
- . Different lenght: 200 - 250 - 300 mm
- . Supplied with screws



**FB020138**

## Door guard:

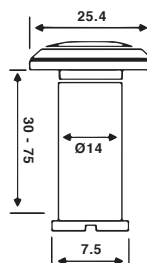
- . Security Door Guard
- . For inward opening doors
- . Size: 108x63 mm
- . Available in zinc alloy or stainless steel



**DCH1086338**

## Door Viewer:

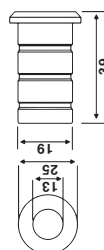
- . Lens material: Glass
- . Door viewer 200 degrees
- . Suitable for door thickness 40 - 60mm
- . Size: 30x16 mm



**DW301638**

## Dust proof socket:

- . Sprung dirt excluding floor socket
- . Spring loaded plunger returns to floor or threshold level any time flush bolt is retracted
- . Size: 39x19 mm
- . Satin finish
- . SUS 304



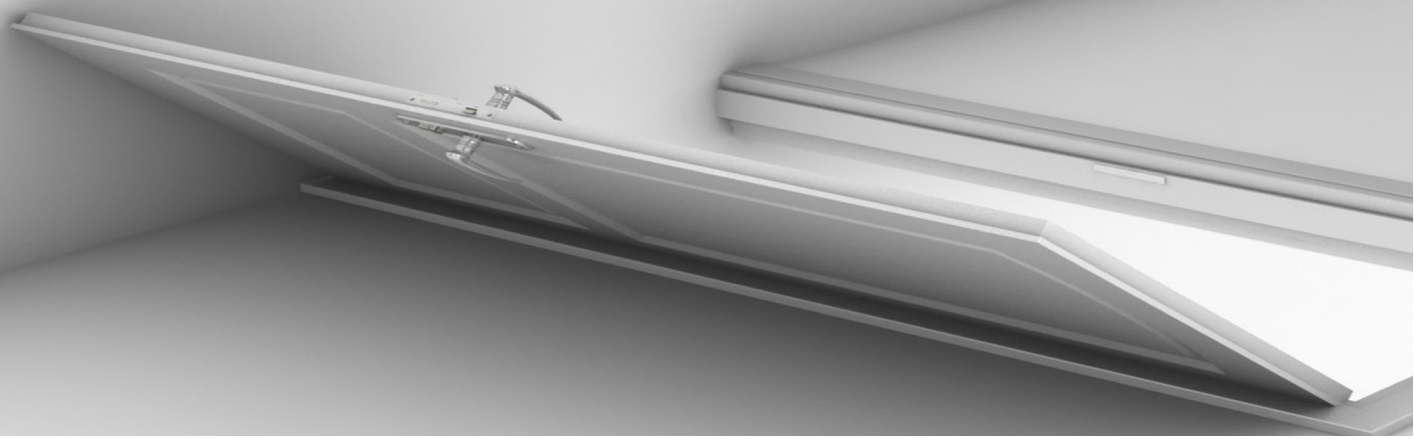
**DP391938**



*Please visit our Website to find the complete range and more !!!*



**DLA Handles di De Lorenzis Antonio**  
**Via Mocenigo Traversa III , 1/B**  
**25078 Vestone (BS) - Italia**  
**cell. +39 371 342 0144 - tel/fax +39 0365 821054**  
**info@dlahandles.it - www.dlahandles.it**





**EVVA**  
access to security





# EVVA electronic access systems

## AirKey



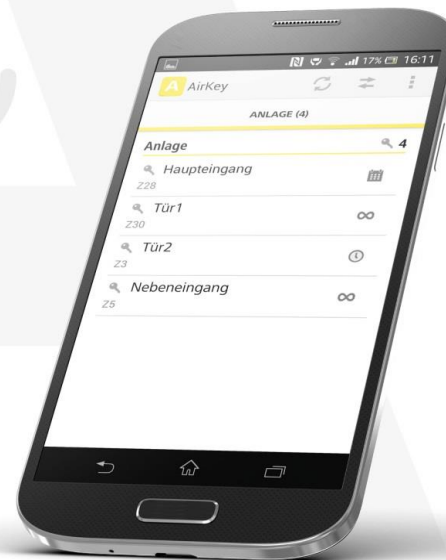
## Xesar





# AirKey

Das Smartphone ist der Schlüssel



The smartphone is the key

## The smartphone is the key



**NFC & BLE based access control system  
adapted for flexible use**



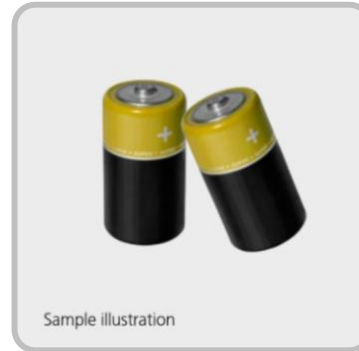
**Android and iPhone  
compatible with  
AirKey-App**



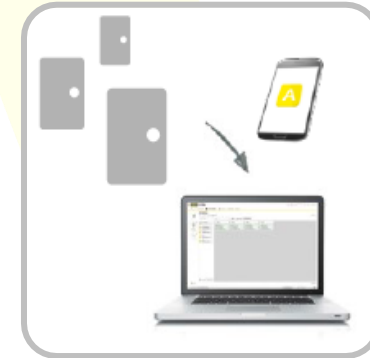
**Access to web-based software from  
anywhere**



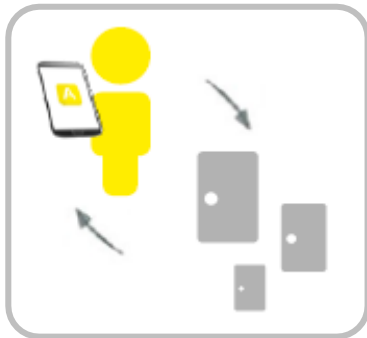
**Electronic access control (RFID)**



**Battery powered**  
no wiring needed



**Web-based solution**



**Ease of use**  
just drag-and drop to  
assign authorisations

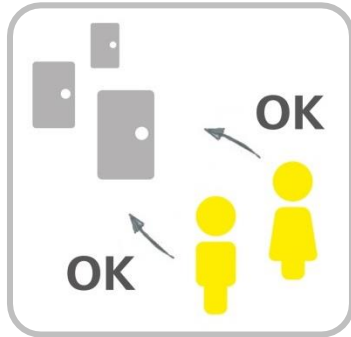


**Simple installation  
& setup**



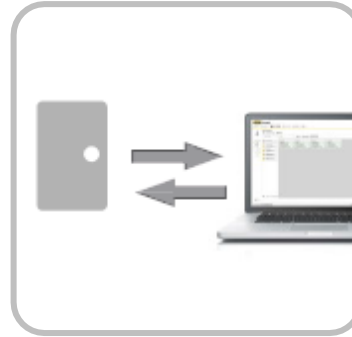
**Premium quality**





## **Flexibility**

instantly block or change  
access authorisations



## **Event logging**

track records of all events



## **High security**

components and software



## **Wide product range**

different components, cylinder  
profiles, finishes and functions



## **All-purpose** for different door types



## **Web-based software**

free of charge



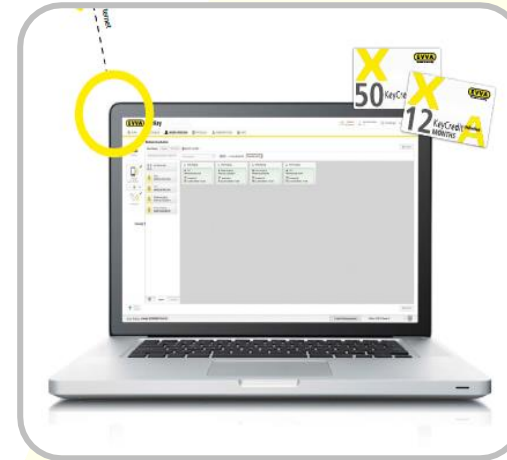
## Components:

- Airkey Cylinders
- Airkey Wall Reader
- Padlocks
- Camlocks
- ID Media i.e. Smartphone or RFID Chips



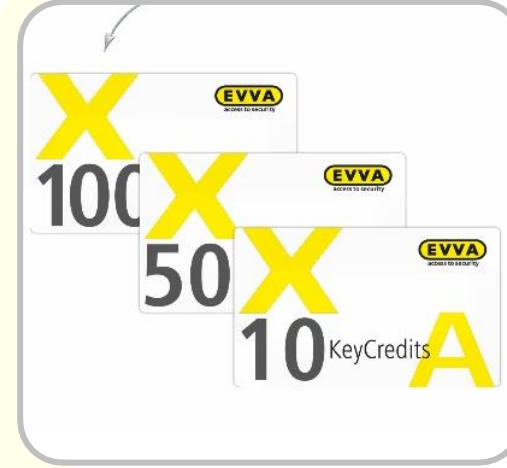
## Accessories:

- EPD
- Special Tool
- Battery with sealings
- Mini coding station



## Online administration:

- Login with username and PW
- Control the System on finger tips



## KeyCredits:

- 10,50,100 or
- Unlimited for 12 or 36 months

Pay per key – only pay for what you need

A KeyCredit is required to assign or change an access authorisation.

An identification medium can be deleted or blocked free of charge.



For systems with only few persons and few changes of permissions

For 10, 50 or 100 permission changes



For systems with several persons and frequent changes of permissions

Unlimited number of permission changes for 1 or 3 years

Upgrading from KeyCredits 10, 50 or 100 to KeyCredit

Unlimited is possible at any time. Remaining key credits will not expire

» **AirKey is the ideal solution for small to medium sized projects**

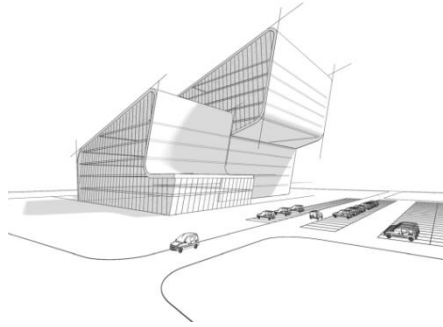
» **For small projects AirKey fits perfectly**

- › Software free of charge
- › Integration with mechanical systems (combi-systems)
- › Integration with 3<sup>rd</sup> party Software
- › Low starting costs with full functionality

» **No wiring required as AirKey is battery powered**

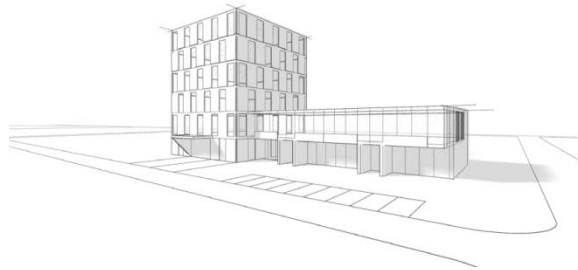
» **System is easily scalable – no limitations on system extensions**





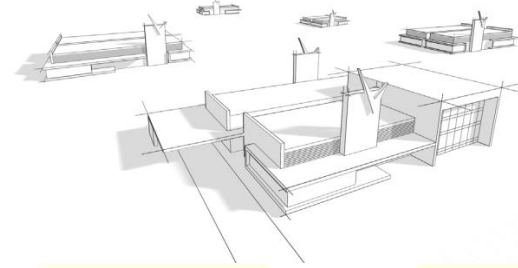
## Service providers

Community nurses, maintenance and service providers, security services, delivery services, telecommunications service providers



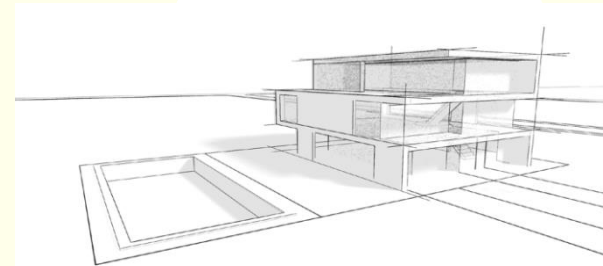
## Small businesses & shared office

Sole traders, shared offices, law firms, doctor's offices, pharmacies, restaurants, small commercial businesses



## Businesses with various sites

Supermarkets, petrol stations, pharmaceutical retailers, DIY retailers, retail and restaurant chains



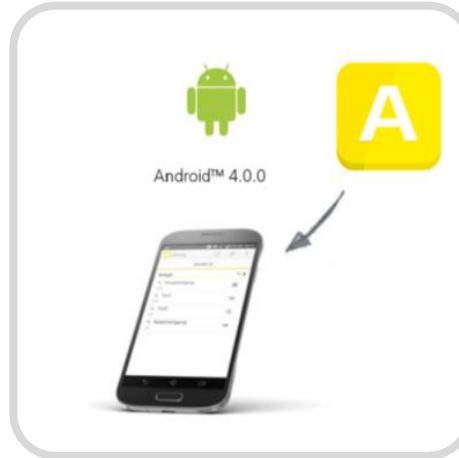
## Private premises

Detached properties, holiday homes, flats, club premises, common rooms

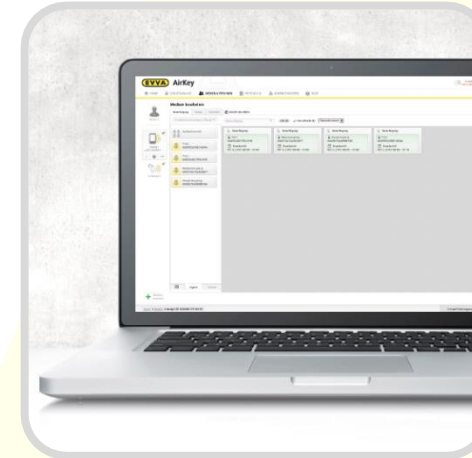
# AirKey | Commissioning of the system



**Mount components**



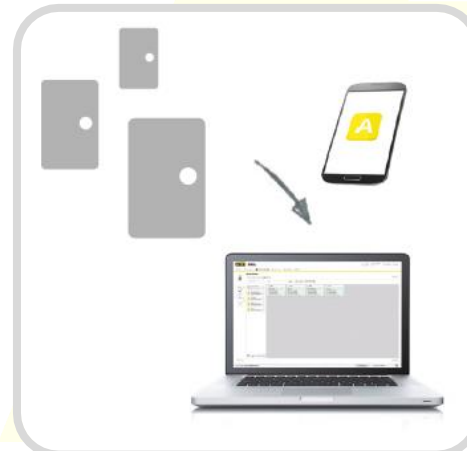
**Install AirKey App**



**Register online**



**Create users (i.e. Smartphone)**

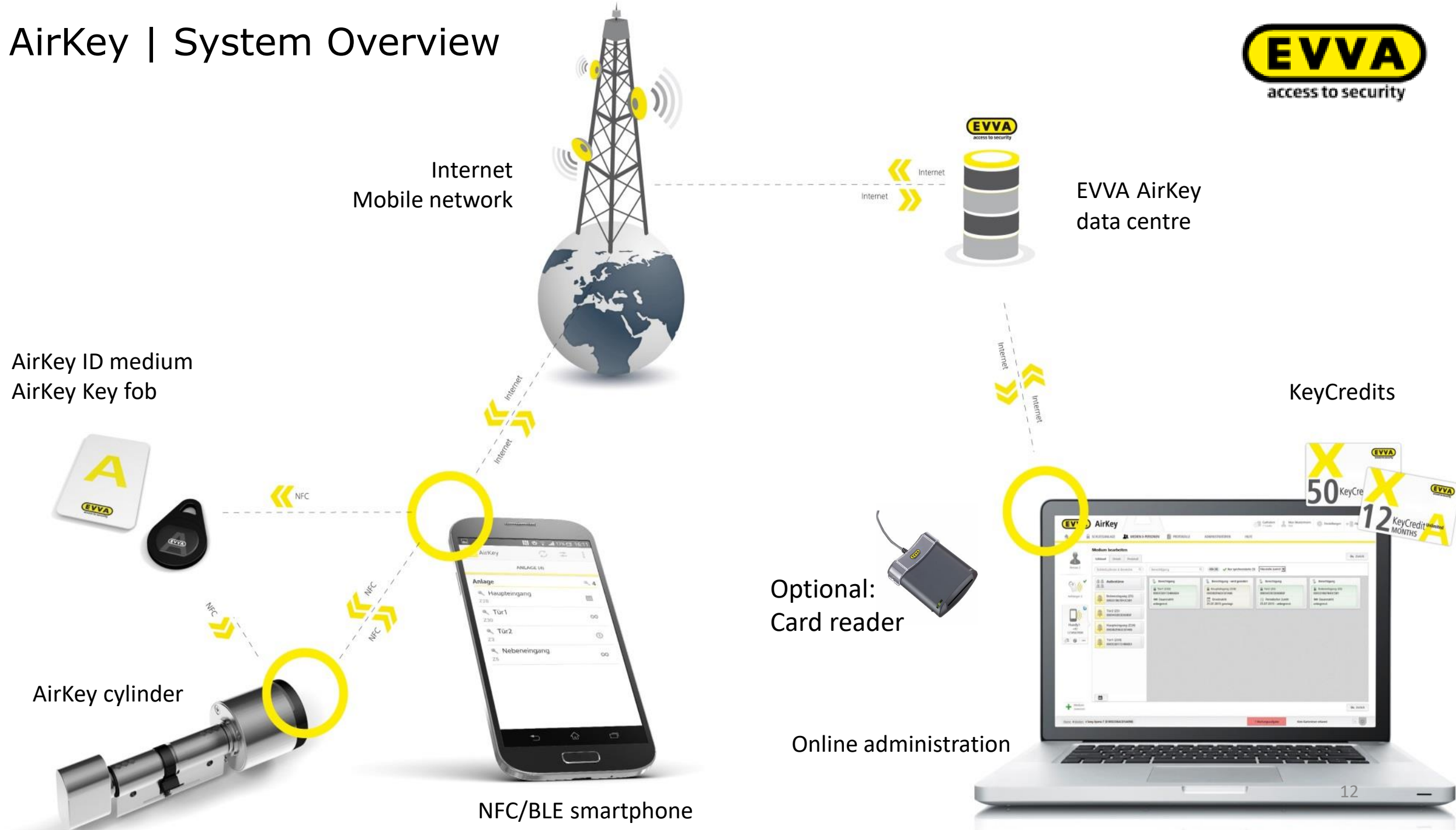


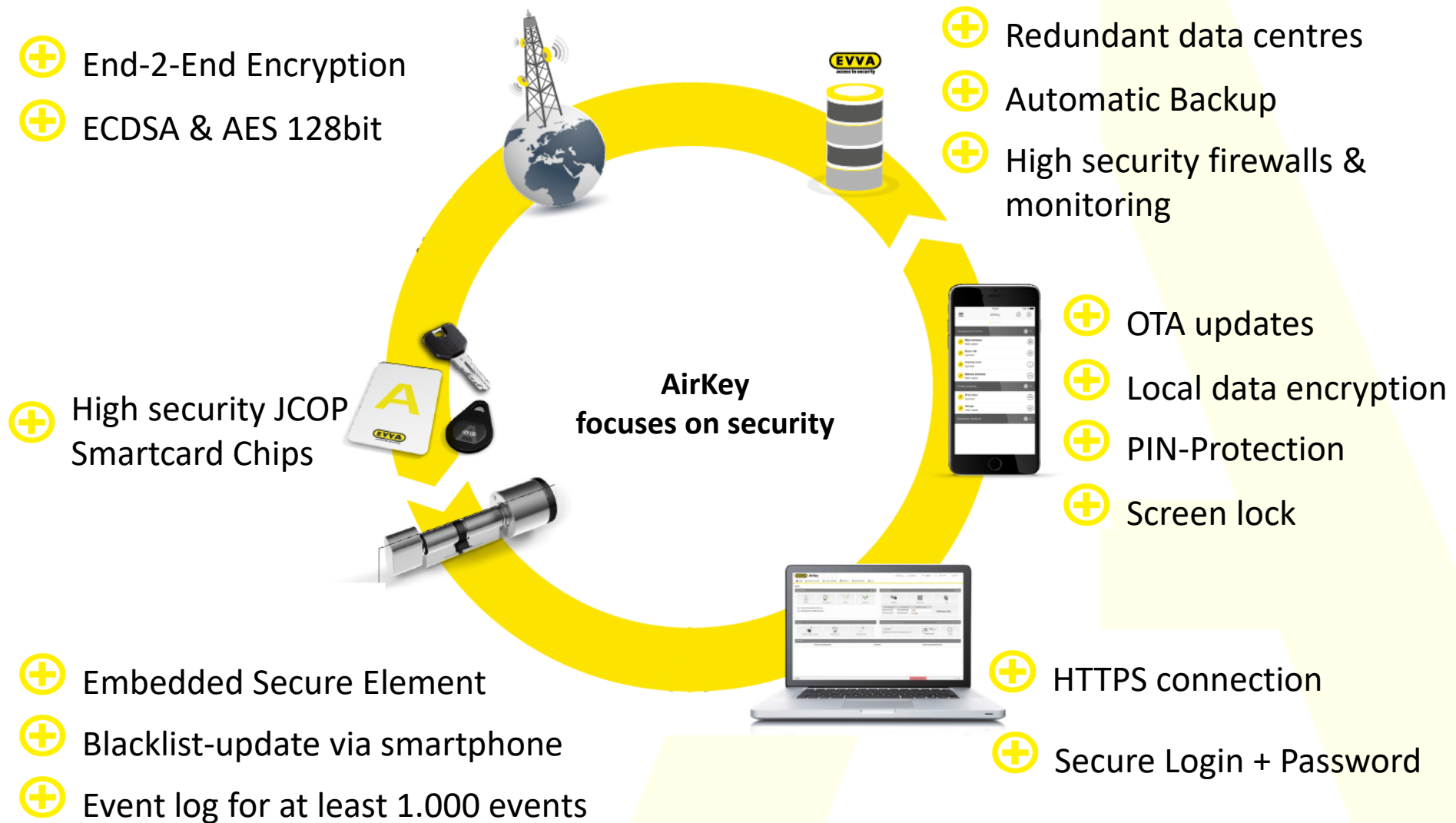
**Add components**



**Pay via KeyCredits**

# AirKey | System Overview





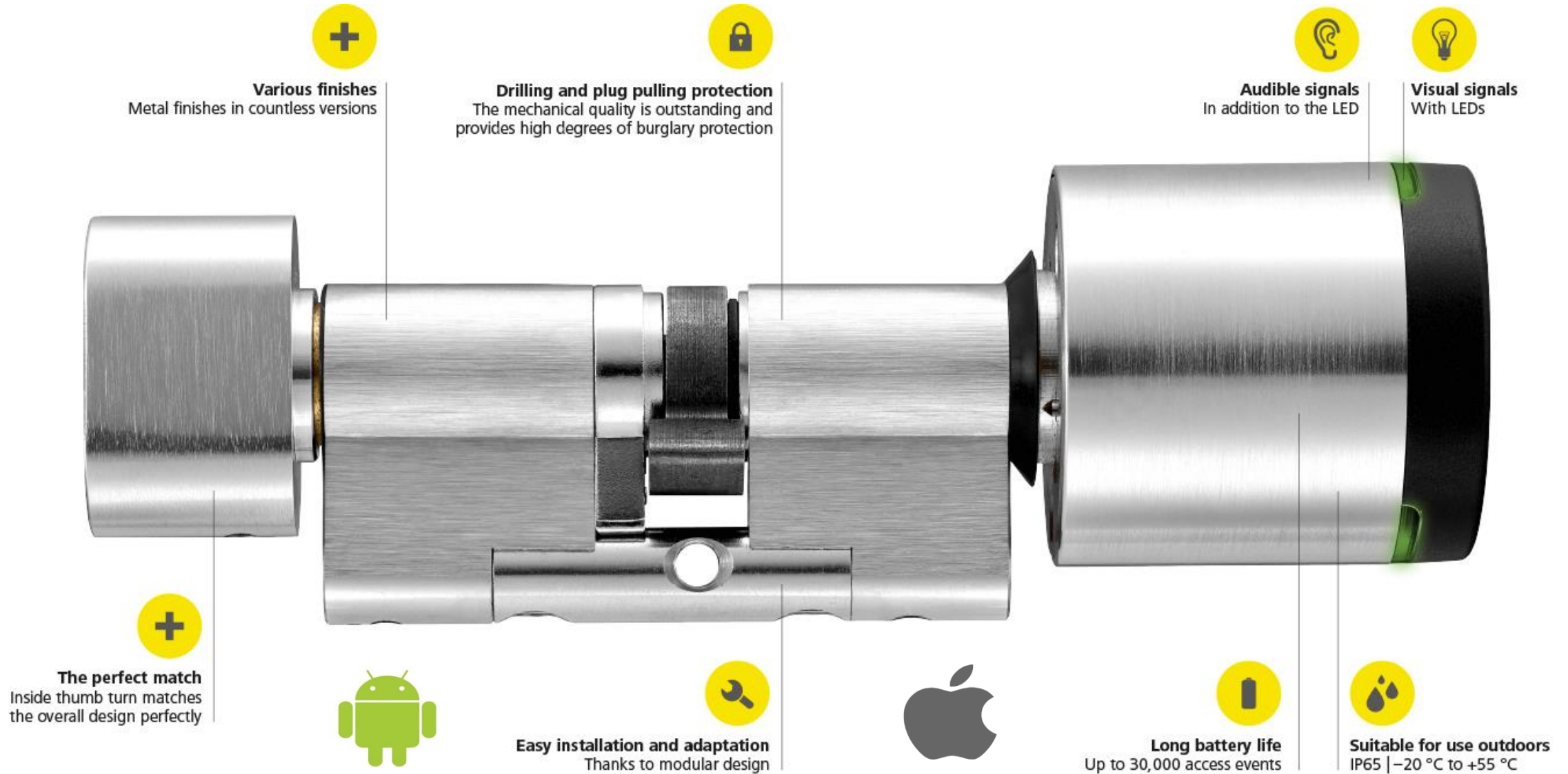




# AIRKEY CYLINDER



# AirKey | Cylinder-Overview



# AirKey cylinder | Advantages



## Secure

Drilling and plug  
pulling protection



## Adjustable

Modular system for easy  
length adaptation



## Safe

Perfect for panic- and  
emergency exit doors



## Mounted...

Insert batteries and  
mount thumb turn with  
special tools



## ...in 3...

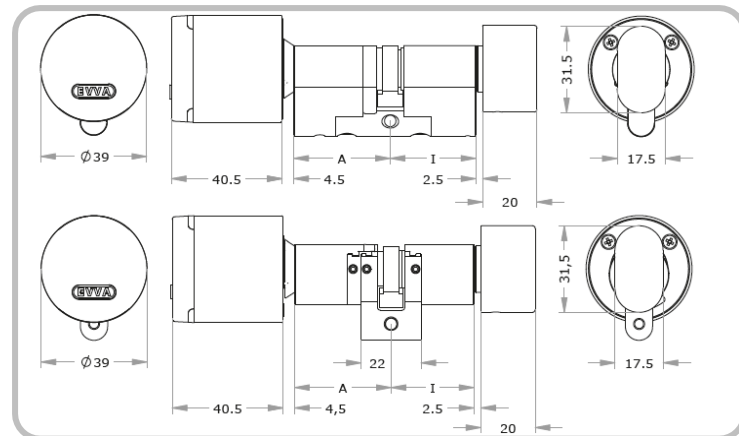
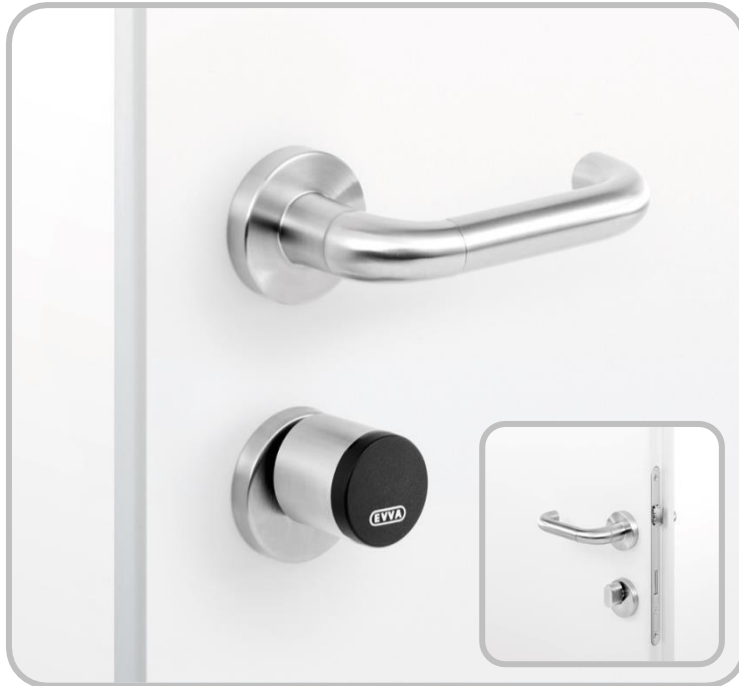
Fix cylinder with  
screw



## ...steps

Mount inside thumb  
turn

# AirKey | Cylinder | One-sided access

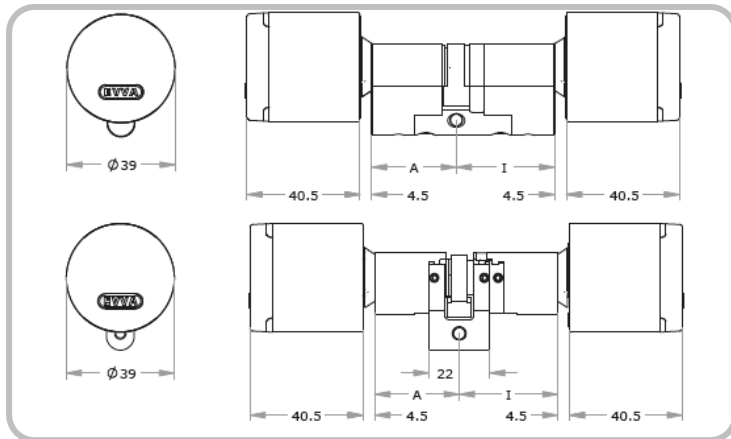


Assembly:



- › The AirKey cylinder fulfils the highest security requirements for inside and outside use
- › Perfect for full-leaf, metal frame doors





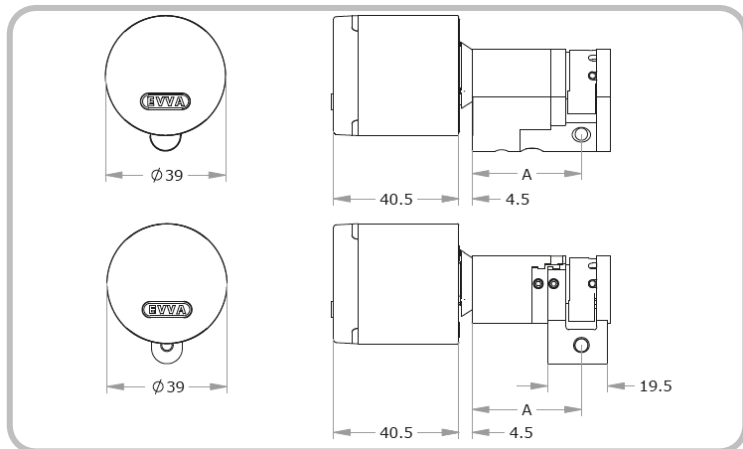
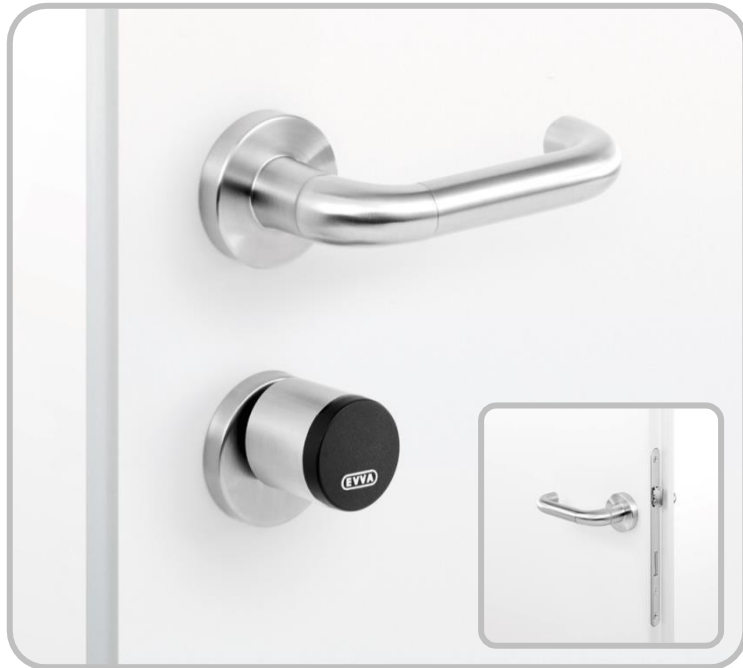
Assembly:



- › The AirKey e-cylinder with double sided access control for high security doors where authorisation needs to be checked on both sides.
- › Perfect for full-leaf doors, metal frame doors and for landmarked buildings.







Assembly:



- › The AirKey e-cylinder is the ideal solution for key switches, cabinets, tubular safes or door situations with no cylinder on the inside

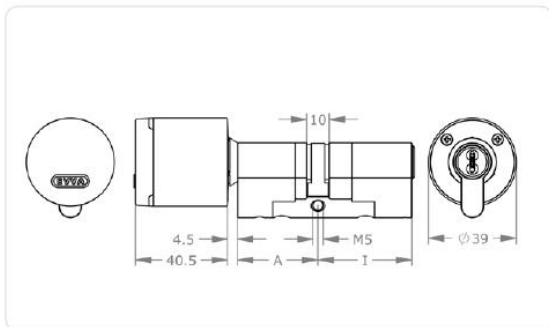


# AirKey | Cylinder | Hybrid Cylinder

## SYMO DZ-S double cylinder with European profile

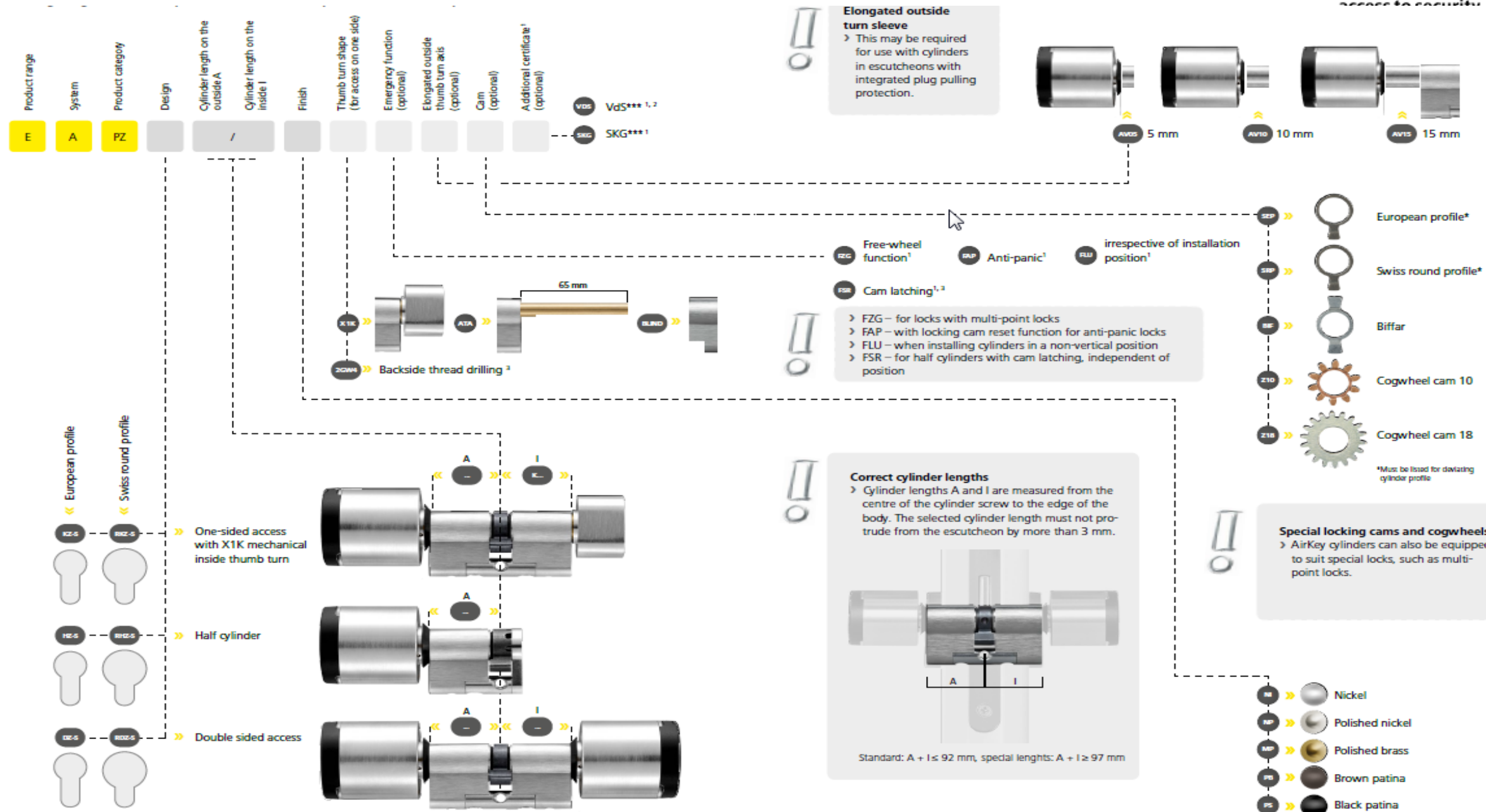


- Mechanical on one side, electronic on the other – one cylinder, two systems
- Increased protection against burglary and quick access for rescue forces in case of emergency
- Ideal for doors that are to be locked from inside with only one key (e.g. school playground doors)



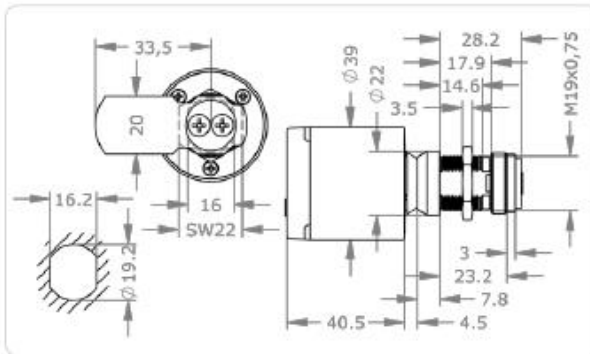
**Combi key**  
One key locks mechanical and electronic systems

# AirKey | Cylinder | Product code



# AirKey | Cam Lock

## Cam Lock (MB19-S)



Length	23 mm
Finish	NI – nickel   NP – polished nickel   MP – polished brass
Elongated outside thumb turn axis	AV05 – 5 mm   AV10 – 10 mm   AV15 – 15 mm
Locking rotation	ST[A-H] - Locking rotation A-H
Lever	H[XX][A] – lever for sheet metal boxes and display cabinets   HB[XX][A] – lever for post box systems   HB01[A][B] – horizontal lever HB01[A][B]
Security features	Locked lever   Blocking thumb turn to prevent manipulation   Rated brake point on the outside thumb turn   Engages only if authorised   Event protocol   Plug pulling protection   Integrated EAL5+ certified secure element   ECDSA and AES encryption

### Application examples



#### Glass showcases

The AirKey lever cylinder is ideal for installation in glass showcases.



#### Letter box

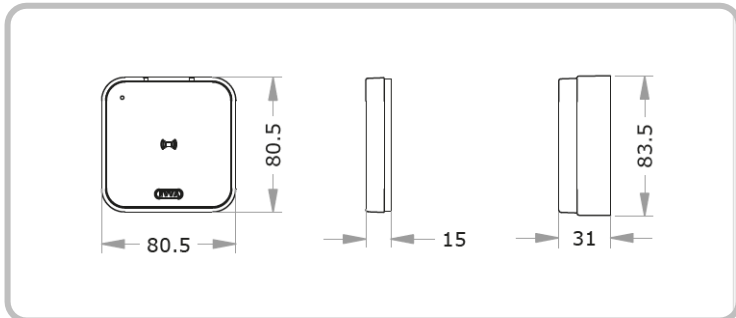
For use in letter boxes indoors and outdoors.

- AirKey cam lock can be used in sheet metal, glass cabinet doors, containers and letter boxes on the inside and outside and they are delivered with a thread (19mm diameter) and a nut.

# AIRKEY Wall Reader







Assembly:



- › The AirKey Wall Reader is the ideal solution to operate electronic access controls, sliding doors, elevators, EMZYs, etc.
- › It perfectly fits for inside and outside use thanks to its IP65 protection





**Glass in  
black**



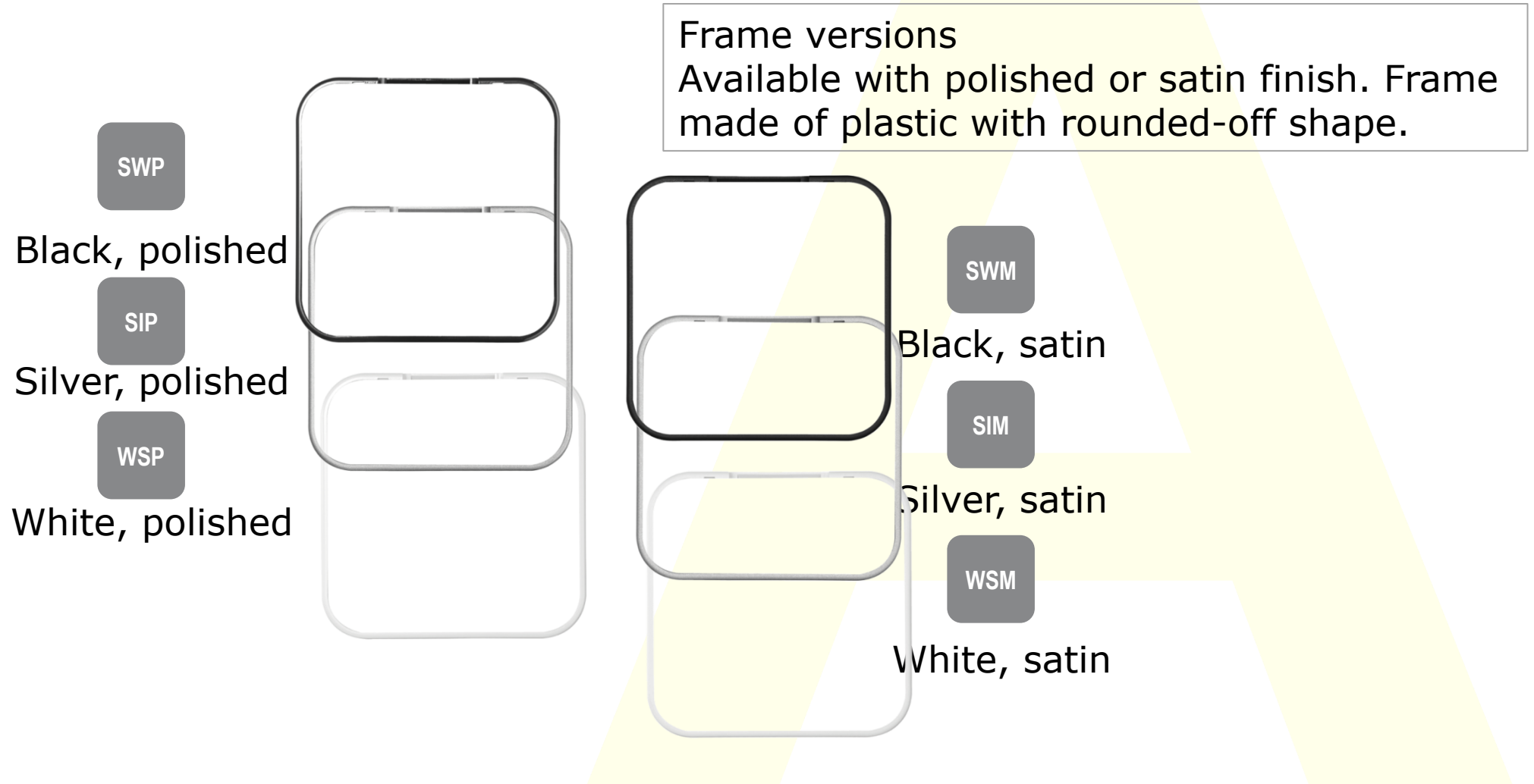
**Glass in  
white**



**Glass in  
silver**

Combination of the frame versions with the glass front panels:





# AirKey wall reader | Advantages



## **Elegant**

Flat design with glass panel



## **High Quality**

Durable front panel



## **Variable**

18 possible colour combinations



## **Functional**

From electric strikes to motorised cylinders



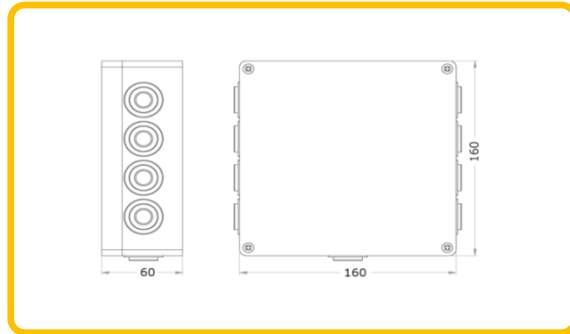
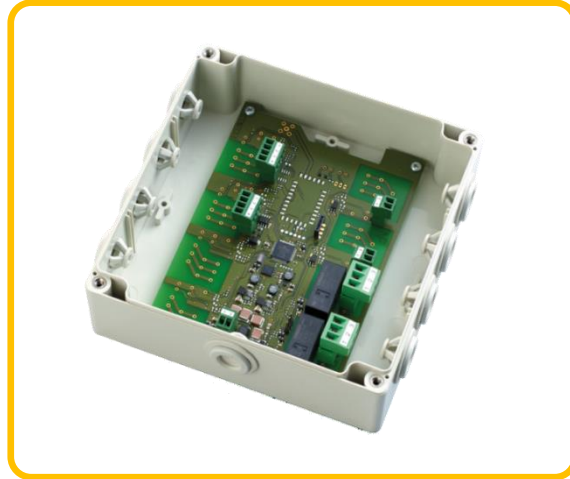
## **Compatible**

For barriers, elevators, etc.



## **Flexible**

Large reading area



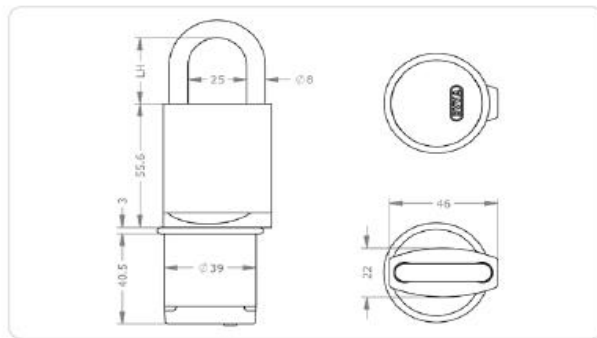
- The AirKey wall reader control unit is designed to activate electronic locking elements in any type of door, for example in sliding or swinging doors, for electronic door openers, lifts and in electronic gate systems.
- Each control unit can be operated with one AirKey wall reader.
- The relay can be activated by external devices via the input





# AirKey | Padlock

HM24-S



Shackle variant, Nirol/steel, Clear height in LH mm	S17   S30   N30   N40   N50   N60   N70   N80   N90   N100   N120   N150   N180   N200
Finish	NI – nickel
Optional security features	BS – shackle protection, clear width 12 mm   KB - Chain fixation

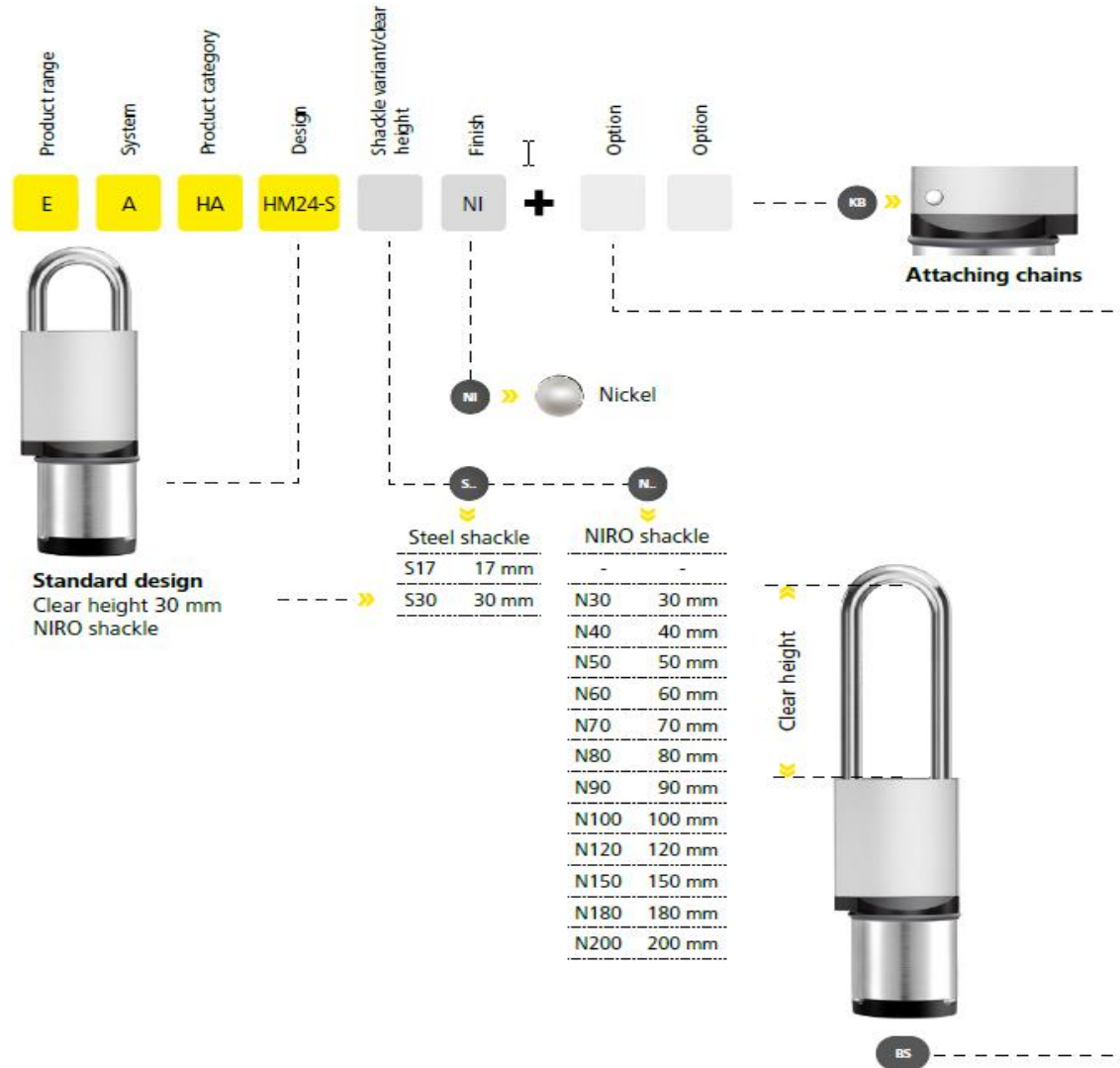


- The HM24-S AirKey padlock with hardened steel shackle is suitable for securing barrier systems, roller shutters, depots and archive containers.
- required assembly tool E.ZU.PZ.ZW.V2



# AirKey | Padlock

Product code



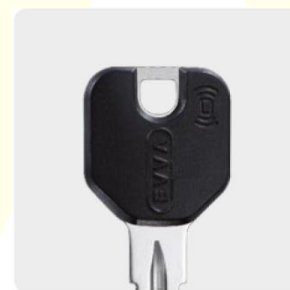
**Shackle protection**  
Exclusively in combination  
with S17 shackle variant  
(steel shackle, clear height 12 mm).





# AIRKEY

## Identification Media



## No smartphone? The identification media

- AirKey Identification media are contactless RFID chips based on JCOP
- Additional Mifare Desfire EV1 segment for third-party applications, such as time sheets, coffee machine, etc. for all identification media



# AirKey | Key Features

## Smart features



### **For iPhone and Android smartphones**

Be it iPhones or Android smartphones, AirKey gives you the choice how to unlock your doors.



### **Geotagging**

Smartphones know where locking system components are located and guide the way using the navigation app.



### **Send a key**

Simply send keys to freelancers or holiday guests as push notifications. Including individual texts.



### **Office mode**

Fully or semi-automatic office mode at certain doors and at certain times. Automatically takes into account public holidays as well as summer and winter time.



### **Component sharing**

Simple share locking system components with tenants, e.g. in shared offices for individual management.




### **Multi-administration**

Quickly and easily manage various company sites with several admins.



- The mobile phone is the key.
- Just as dynamic as customers' needs!
- AirKey even for small systems available.
- Flexibility – quickly granted access.
- Hand over keys online and around the world.
- Maximum security paired with simple operation in the online administration.
- Impossible to lose keys in the conventional sense.
- Less effort/costs during relocation/conversion – cylinders grow with the system.
- Event logs for access events.
- Pay per key – only pay for what you need!
- API – Integration with 3<sup>rd</sup> party Software possible.

A large, light yellow letter 'A' is centered in the background of the slide.

Thank you for participating!  
Good luck with the future projects!



access to security



# Xesar

Simply versatile



# Xesar. Simply versatile

Control, security and flexibility merged in an innovative, electronic locking system – that's Xesar. Be it residential developments, educational facilities or office buildings, Xesar is simple and secure to manage. You determine whether to manage the system within a locally installed network or via the cloud.



---

## Xesar top features

- › Multi-station operation with user roles
  - › Versatile product range
  - › Appealing payment models
  - › Flexible system extensions
-



# One system, many options

Individual Xesar components are synchronised with the software using the Xesar tablet to commission the Xesar system. Within the virtual network the identification media in circulation distribute the security information (blacklist) throughout the facility.



## **Xesar access components**

Management and configuration via Xesar software

## **Xesar identification media**

For identification at doors



## **KeyCredits – the choice is yours**

Two credit models are available for the operation of the Xesar system



## **KeyCredits 10, 50, 100**

Do you operate a small system or a system that is only affected by very few changes to authorisations? Then select KeyCredits variants with quantity-based credit, i.e. 10, 50 or 100 credits. You pay one KeyCredit per access authorisation or per change.

### **Xesar software**

This is where the system is comprehensively managed



Controls | LAN



### **Xesar online wall readers**

Offers door control and remote opening



### **KeyCredit Xesar Lifetime**

You operate a large system subject to frequent changes to authorisations? Then you should opt for the KeyCredit Xesar Lifetime time-based variant. Without any time or quantity limits you can grant or change an unlimited amount of authorisations.

# Xesar software

## Flexible – simple – secure



### **Improved on-screen transparency**

This increases the management efficiency and reduces costs.



### **More flexibility thanks to multi-station operation**

Several users simultaneously issue media, change authorisations or remotely open online doors.



### **More convenience thanks to Online wall readers**

Open and monitor doors remotely. Convenient for supplier deliveries.



### **More versatile solutions thanks to interfaces**

Thanks to PubSub it is compatible with your alarm, smart building or time recording systems.



### **More individualism on the dashboard**

Porters, HR staff or maintenance engineers design the user interface according to their activities.



### **More security thanks to shop mode**

Thanks to shop mode office mode only starts after having opened the door for the first time.



# Versatile product range

## Whatever you want, Xesar can deliver

Thanks to the wide product range Xesar can not only be used in doors on the inside and outside, for turnstiles and emergency exit doors, but the system is even suitable for server cabinets and roller shutter gates.



### Xesar escutcheons

All-rounders with elegant design – that's the Xesar escutcheon. Suitable for solid or metal frame doors as well as doors with panic bars.

### Xesar cylinders

The cylinders are suitable for outdoors and indoors and provide all essential security features. Their modular design enables on-site elongation adaptation.







## Xesar handles

Handles are ideal for use on internal doors. Various finishes and handle shapes offer a solution for any architectural requirements.

## Xesar wall readers

Xesar wall readers are suitable for indoor and outdoor use. As online wall readers they can, for instance, be operated remotely by porters to grant access to suppliers.



## Xesar padlocks

Protects archiving facilities, server cabinets or roller shutter gates indoors and outdoors.



## Xesar cam lock

Suitable for post boxes or filing cabinets these cylinders complete your Xesar system.

# Unique EVVA service

Since 1919, EVVA services have been focused on customer benefits. This has resulted in market-based products, the best product and consulting service as well as an outstanding locking system expertise.



## Locking systems by professionals

Master key systems define who has access to which facilities. EVVA provides comprehensive master key system and access control system expertise as well as high-performance locking systems.



## Mechanical and electronic locking systems

EVVA is one of the few manufacturers that develops and produces electronic and mechanical locking systems in Vienna. EVVA's electronic and mechanical products can be combined in locking systems around the world depending on customer demands.



## Excellent advice

EVVA is your reliable partner. Be it for technical queries concerning EVVA products or planning issues regarding a project, you can always count on EVVA.

Innovation made in Austria

Trust a family-owned business that has been researching, developing and producing for 100 years and that operates in a respectful and cooperative way. EVVA – Leading European manufacturer in mechanical and electronic locking systems!

**www.evva.com**

