

The Ultimate
Supply Specialists...



**INTEGRATED TRADING
COMPANY W.L.L**

THE ULTIMATE SUPPLY SPECIALISTS



Integrated Trading Company WLL partners with select international companies who are as committed to excellence as we are. By ensuring the quality of our professional relationship, we guarantee that the success of our mutual accomplishments reflect well on our collective reputations. The proof of these partnerships today stand as landmarks in the rapidly expanding development of Qatar.



**INTEGRATED TRADING
COMPANY W.L.L**

THE ULTIMATE SUPPLY SPECIALISTS



Safety at workplace has been a top concern of safety professionals across the globe. The desire to keep the workforce protected of unwanted incidents requires the selection of the right personal protective equipment (PPE).

GUARDIAN SAFETY

With its comprehensive range of safety products and manufactured to international standards such as CE and ANSI, GUARDIAN Safety Products is the final word when it comes to Personal Protective Equipment. GUARDIAN has a wide gamut of products including coveralls, gloves, shoes, eyewear, ear protection and fall protection.

- | | |
|------------------------------|-----------------------|
| › Workwear / Body Protection | › Safety Footwear |
| › Head, Eye & Ear Protection | › Fall Protection |
| › Respiratory Protection | › Emergency Equipment |
| › Hand Protection | |



www.guardian-safety.com



Bata Industrials, a specialized division of the world's largest shoe manufacturer, The Bata Shoe Organization (BSO) was established to address safety footwear requirements of various industry professionals. Today, Bata Industrials is one of world's largest manufacturer & marketer of Safety footwear and the only one that is truly a global player. The company headquarters is located in Best, the Netherlands.

Why Bata?

- › A professional shoe manufacturer from Europe having a legacy of more than 100 years.
- › Having its own patented technologies like Easy Rolling system®, Tunnelsystem®, Bata Cool Comfort®, Bata VentAir®, Bata Air Xtreme® and Dri-Lex® and TriTech Plus® related to Reducing fatigue, shock absorbing capabilities, wear-resistance, slip-resistance and protection against slipping, shards, oils, acids and heat (up to 300 degrees Centigrade).
- › Global partnerships with Goretex, Boa, Fontys University of Applied Sciences



Bata Industrials®

SAFETY DIVISION



The leading player on the high-quality protective gloves market due to the innovative, high-tech nature of its products, the effectiveness of its distribution and the understanding of the needs of end users, MAPA has a glove for your every need!



Disposable

Disposable gloves to protect hands and products during delicate work



Liquidproof protection

For prolonged contact with mildly aggressive liquids



Chemical protection

A solution for every situation, due to a complete range classified by polymer



Handling protection

To resist injuries endured during general handling work (Precision work / Heavy-duty work)



Cut protection

Solutions adapted to all hazardous cutting situations (Precision work/ Heavy-duty work)



Thermal protection

For low temperature environments and hot/ cold contacts



Critical environments

Solutions to ensure the protection of both operations and the products they handle (controlled and confined environments)

MAPA®
PROFESSIONNEL

www.mapa-pro.net



Arvind's Advanced Materials is a certified ISO 9001: 2008 manufacturing facility producing high performance industrial fabrics with world class technology and knowhow based on a strong foundation of knowledge, research and market needs. Arvind Advanced Materials is committed to offer textile solutions for rapidly growing sectors like general industrial manufacturing and processing, infrastructure, transport, energy and personal protection.

- › PROBANO®
- › PYROVATEX®
- › PROTEX® MODACRYLIC
- › NOMEX®
- › HEAT & CUT RESISTANT



KSU's innovative products include:

- › Pipe Threading Machine
- › Drain Cleaners
- › Core Drill
- › Double Teeth Dies
- › Flaring Tools
- › Cutters
- › Copper Pipe Expander





Crawford Tools UK has grown to be a precise, quality driven manufacturer paying the highest attention to international standards. We manufacture and distribute professional grade pipe tools and cable tool accessories worldwide for trade professionals who demand superior performance and durability on the job.

Pipe Machines

- › Pipe Bending Machines
- › Threading Machines
- › Grooving Machines
- › Manual Test Pumps
- › Electric Test Pumps
- › Hole Saw Machines



Butt Welding Machines



Socket Welding



Cable Tools

- › Hydraulic Cable Cutters
- › Cable Crimpers
- › Foot Pumps



INDUSTRIAL DIVISION



TOPTUL has become the tool brand that offers a full range of professional tools with high quality in the global market. Today, TOPTUL continues to improve tool convenience and practicality of end-users. As a quality oriented tool company, TOPTUL is known for its excellent Torque, Tough Grip, Design and Finish - They are made of Chrome Vanadium, Chrome Molybdenum Steel and other premium tool steel.

- › Master Tool Sets
- › Wrenches & Torque Wrenches
- › Hand Sockets - Bit Sockets & Accessories
- › Impact Sockets , Bit Sockets & Accessories
- › Hexagon & Star Keys
- › Screwdrivers & Bits
- › Pliers
- › Tool Storage & Display
- › Auto Tools

TOPTUL®
THE MARK OF PROFESSIONAL TOOLS

www.toptul.com



Makita is an innovation leader manufacturing best in class products with its unmatched quality and durability. Every day on Job sites around the world, Makita delivers the power, performance and durability that professional users demand with products that are more compact, have less vibration and feel better.

Their vast product range includes:

Cordless Tools

Drilling | Fastening | Impact Drilling

Rotary Hammers

Hex Shank Rotary Hammers

Demolition Hammers

Chipping Hammers | Power Scraper

Cordless and AC Multi Tool

Cutter (Concrete, Tiles, Masonry...)

Grinders

Sanders | Polishers

Sawing

Routers | Planers

Shears | Nibblers

Pneumatic Tools

Garden | Agriculture Tools

Petrol Engine Tools

Dust Extraction Tools

Laser | Heat Gun

The Makita logo, featuring the word "Makita" in a stylized, italicized white font on a red rectangular background.

www.makitatools.com



Fluke Corporation, a subsidiary of the Danaher Corporation, is a manufacturer of industrial testing equipment including electronic test equipment since 1948.

Industrial/Electronic Service Installation and Maintenance

Today, electronics are integrated into an increasing number of electrical and electro-mechanical systems. Fluke's comprehensive line of digital multimeters, electrical power analyzers, thermal imagers, insulation resistance testers, accessories, plus the integrated ScopeMeter™ handheld test tools, are being used by a growing number of service technicians, plant engineers and installation and maintenance technicians.

Electrical and Temperature

Electricians, HVAC/R technicians, plant engineers and power quality consultants involved in the maintenance, service and design of every type of residential, industrial, plant and commercial building use Fluke professional test tools. Fluke products such as: electrical testers, digital multimeters (DMMs), clamp meters, single and three-phase power quality meters and DMM accessories are designed for day-to-day field troubleshooting and maintenance of electrical systems, electrical power systems, HVAC/R systems, and associated equipment.

FLUKE®

www.fluke.com



Under the motto of "Quality First", Mitutoyo now has become a leading global brand and as the manufacturer of a comprehensive range of precision measuring equipment. Mitutoyo also provides leading technologies that answer the changing needs of industry, providing not just measuring tools but also measurement-related technologies.

Their products range include:

Micrometers

Calipers

Dial Gauges / Test Indicators

Height Measuring Tools

Depth Measuring Tools

Inside Diameter Measuring Tools

Gauge Blocks / Calibration Equipment

Precision Sensor System

Linear Encoders

Form Measuring Instruments

Hardness Testing Machines

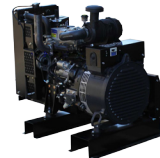
Coordinate Measuring Machines . Digitizers

Vision / Optical Instruments

Measurement Data System

Mitutoyo

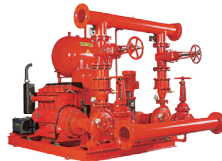
www.mitutoyo.com



The design features of Perkins engines ensure their suitability for all power generation applications of upto 2264 kVA in diesel power or 1008 kW on gas. For genset applications, Perkins has a comprehensive range of Electropak™ specifications complete and ready to run. Power ratings are available up to 600 kW for regulated countries and up to 1500 kW for lesser regulated areas.



www.perkinspower.com



SFFECO is a brand name that stands for innovation and excellence. It has been a pioneer in manufacturing remarkable products and providing services at par with International standards. SFFECO has a lengthy record of pioneering innovation and its products are well known in the local/ international market.

- › Fire Cabinets
- › Certified and Standard Extinguishing Systems
- › Fire Doors & Frames
- › Fire Hydrants & Cabinets
- › Fire Pumps
- › Foam Equipments
- › Valves



SFFECO
www.sffeco.com



FASTENERS AND FIXING SYSTEMS

We hold ample range of fasteners, with the best quality assurance and a team comprises of experts with sound technical knowledge of fasteners and is able to give our clients the best fixing solution. Our products conform to International Standards such as DIN, ASTM, BSI, ANSI, JIS and ISO etc.

Our range of fasteners include

- | | | |
|---------|-----------|--------------------|
| › Bolts | › Washers | › Foundation Bolts |
| › Nuts | › Studs | › Threaded Rods |

SCAFFOLDING

We Source **SCAFFOLDING** solutions that suite a range of application and industries that provides better work place safety and icrease productivity. With our continual efforts to improve products and make these as safe and efficient as possible.



We offer a variety of solution that includes:

- | | |
|--|---------------------------------------|
| › Light Weight Aluminum Mobile Scaffolding | › Combination Tower |
| › Mobile Stairway Towers | › Span deck System |
| › Foldable Narrow Towers | › Modular Triangular Bridge Scaffolds |

SERVICE CENTERS

Need repairs?

Our service centers are unmatched in the industry with independent repair shops and certified repair technicians. We also offer maintenance services on your field equipment leading ourselves to the most dependable service and support program.



**INTEGRATED TRADING
COMPANY W.L.L**
THE ULTIMATE SUPPLY SPECIALISTS

T (+974) 44270711

F (+974) 44427030

E info@integratedqatar.com

W www.integratedqatar.com