



smart n secure

Your trusted
Access Solutions Partner

Table of Contents



About Us



Our Mission & Vision



Our Brands & Services



Product Categories



Major Project References



Certification



Health Care Project References



Trade Licence



Contact Us



**Most
Innovative & Reliable**
solutions in the industry!

About Our Company

”

Swedish Access Solutions (SAS) has been formed by leading professionals from access solutions industry. It was an initiative to promote finest quality products from Scandinavian countries to Middle East and Africa region. Our continued success has facilitated us to establish partnerships with renowned manufacturers from other parts of the world as well. SAS has a registered office in Qatar to support their business in the region.

Our products offer includes Access Control System, Access Automatic System, Automatic Entrance System and Architectural Door Hardware System. We offer the most innovative and reliable solutions available in the industry.

Our **smart n secure** Solutions assisted us to grow into a leading partner for major projects in the region.



Mission

We have a mission to grow as the most credible access solutions provider in the region by preserving constant organizational growth.

Vision

We are committed to offer the best products with reliable quality in door access solutions. This commitments achieved on working with world renowned brands.



Our Brands & Services

The logo for ASSA ABLOY, featuring the company name in white, bold, sans-serif capital letters on a solid blue rectangular background.

Access Control
Architectural Door Hardware
Glass Interior Fittings
Key Management System

The logo for STANLEY Access Technologies, featuring the word "STANLEY" in large, bold, black, sans-serif capital letters with a registered trademark symbol, and "Access Technologies" in a smaller, black, sans-serif font below it, all on a yellow rectangular background.

Touchless Automatic Sliding Doors
Automatic Revolving & Curve Doors
Automatic Swing Door System
Automatic Bi-folding Doors
Telescopic Break Out Doors
Intensive Care Units (ICU) Doors
Hermetically Sealed Doors



Access Doors
Floor Doors
Roof Hatches & Smoke Vents Safety
Accessories



Fire and Smoke Seals
Soundproof Seals
Weather Seals and Strips
Automatic Door Bottom Seals

About Stanley

STANLEY a true innovator in creating one-of-a-kind access solutions to address the challenges customers face – even has door system that are designed specifically for the unique needs of the healthcare and transportation industries. STANLEY healthcare door systems include CCU doors, ICU doors and other types of hospital doors with wide unobstructed views, slide/swing functionality and trackless options that allow for the smooth & safe passage for wheelchairs, patient beds and sensitive equipments.

STANLEY manufactures a full range of swing door systems, which are used to give an otherwise manual door all the functions of a fully automated door. STANLEY door systems are compatible with virtually any new or existing swing door and work in conjunction with a variety of activation controls.

Automatic Revolving Doors



Automatic Sliding Doors

Intensive Care Unit Doors

Automatic Swing Doors



Automatic Sliding Folding Doors

Telescopic Door Operator



About Assa Abloy

Access Control Hardware



ASSA ABLOY is the global leader in door opening solutions and a market leader in most of Europe, North America, South America, China and Oceania.

ASSA ABLOY was formed in 1994 through the merger of ASSA in Sweden and Abloy in Finland. Since then ASSA ABLOY has grown from a regional company to an international group with 47,500 employees and annual sales of SEK 76 billion.

Mechanical & Electro Mechanical Hardware



ASSA ABLOY has a complete range of door opening products, solutions and services for the institutional, commercial and consumer markets. Using the latest technologies and tried-and-tested techniques, ASSA ABLOY constantly developing innovative solutions that improve customers' lives through greater security, safety and convenience.



Product Categories



Access Control Hardware

Access Control Hardware
Keyless Entry
Face Recognition
Key Management System



Architectural Hardware

Hinges
Locks
Lever Handles
Cylinders
Door Closers
Accessories





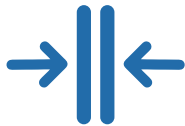
Architectural Glass Solutions

System For Sliding Glass or Doors
Locksets & Hinges
Patch Fittings
Shower Systems



Entrance Solutions

Automatic Sliding Doors
Automatic Revolving Doors
Curved Sliding Doors
ICU Doors
Hermetically Sealed Door



Door Seals

Fire and Smoke Seals
Soundproof seals
Weather Seals
Automatic door bottom seals



ISO Certification



CERTIFICATE



This is to certify that the
Quality Management System of

SWEDISH ACCESS SOLUTIONS

GLOBAL BUSINESS CENTRE 2, C-RING ROAD,
DOHA QATAR

has been found to comply with

ISO 9001:2015

This certificate is applicable to the following scope:

Supply & Installation of Automatic Entrance Doors, ICU
Doors, Hermetically Sealed Doors. Supply of Door
Hardware's, Fire Seals, Smoke Seals, Acoustic Seals and
Access Control Products for Doors.

Certificate No:: BQSC202104003

Date of Initial Registration	03-04-2021
Surveillance Audit on or before	03-03-2022
Certificate Expiry	03-04-2022
Recertification Due	02-04-2024

Authorized Signatory
BQC Assessment Private Limited

Website : www.bqccert.com, E-mail : info@bqccert.com

Accredited by International Accreditation Service

The validity of this certificate can be verified at www.bqccert.com or through info@bqccert.com. This certificate is the property of BQC Assessment Pvt. Ltd. and must be returned on request. Accreditation details are available with IAS, (International Accreditation Service) Inc. USA, at www.iasonline.org
202 DLF Galleria, Mayur Vihar 1, Delhi, India.

Certifications



Al Thumama Stadium

Major Project References

Project : Al Thumama Stadium
Client : Supreme Committee for Delivery & Legacy
Consultant : Jain Consultants
Contractor : Al Jaber Engineering Tekfen Construction
Scope of work : Supply & Installation of Automatic Swing Door Systems for Stadium Entrance.



Al Thumama Stadium



Khalifa Stadium

Project : Khalifa Stadium Renovation
Client : Aspire Zone
Consultant : Qatar Design Consortium
Contractor : Galfar Al Misnad
Scope of Work: Supply & Installation of Automatic
Sliding Entrance System.



Khalifa Stadium - Renovation



E Bus Shelter

Project : Air-Conditioned Electric Bus Shelter
Client : Ashghal - Public Works Authority
Contractor : Norwood Qatar L.L.C
Scope of Work: Supply & Installation of 456 Nos of
Touchless Automatic Sliding
Entrance System for Phase 1 of the
Project.



E Bus Shelter



Doha Metro

The Doha Metro is a rapid transit system in Doha, Qatar's capital city, which became operational on 8 May 2019. It has three lines with an approximate overall length of 76 km and 37 stations. It is an integral component of the large Qatar Rail network, which will include a long-distance rail of passengers and freight, linking Qatar of the GCC, and The Lusail LRT.



Doha Metro



Msheireb Downtown

Msheireb is the world's first sustainable downtown regeneration project, that will revive the old commercial district with a new architectural language that is modern, yet inspired by traditional Qatari heritage and architectural - its proportion, simplicity, space, light, layering, ornament and response to climate. Msheireb Downtown Doha is strategically located in the heart of Doha, the ambitious and thriving capital city of Qatar.



Msheireb Downtown



Qatar Armed Force

Project : Refurbishment of main entrance for
Qatar Armed Force Officer's mess
Client : Qatar Armed Force
Contractor : Al Hazan Trading and
Contracting W.L.L.
Scope of work : Supply and Installation of Automatic
Sliding Entrance System.



Qatar Armed Force



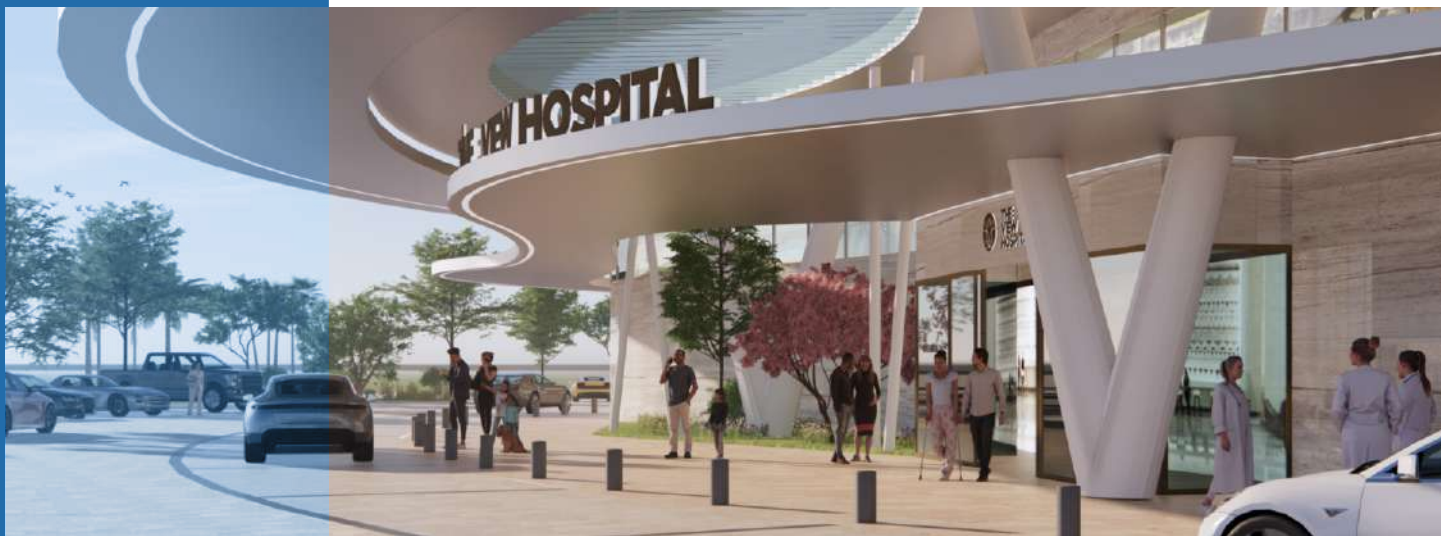
The View Hospital

Health Care Projects References

Project : Design & Construction of The View Hospital
Client : Assets Real Development
Consultant : Lacasa Qatar
Contractor : Urbacon Trading & Contracting
Scope of work : Supply & Installation of 72 Nos of Healthcare Doors.



The View Hospital



Tenbek Hospital

Project : Design and build of Hospital in
Tenbek area
Client : Private Engineering Office
Consultant : KEO
Contractor : Al Ali Engineering
Scope of Work: Supply & Installation of 98 Nos of
ICU Healthcare Door System.



Tenbek Hospital



Skilled Nursing Facilities (SNF)

Project : Skilled Nursing Facilities (SNF)
Client : Hamad Medical Cooperation (HMC)
Consultant : KEO
Contractor : Hyundai Engineering &
Construction Co.Ltd.
Scope of work : Supply of Door Hardware.



Skilled Nursing Facilities (SNF)



HMC - Women's Hospital

Project : HMC - Women's Hospital
Client : Hamad Medical Corporation (HMC)
Consultant : ASTAD
Contractor : Hyundai Engineering & Contracting
Scope of work : Supply & Installation Of Automatic
Sliding Doors & Automatic Swing
Doors Systems.



HMC - Women's Hospital



HMC, Al Khor Hospital

Project : HMC, Al Khor Hospital
Client : Hamad Medical Corporation (HMC)
Consultant : ASTAD
Contractor : KG Group
Scope of work : Supply & Install Of Automatic Sliding
Doors With Breakout, Hermetically
Sealed Doors & Automatic Swing
Door Systems With
Electromechanical Door Hardware
(Delayed Egress - MLR Exit Devices,
Maglocks).



HMC Port - Medical Centre



HMC Port - Medical Centre

Project : HMC Port - Medical Centre
Client : Hamad Medical Corporation (HMC)
Consultant : AECOM
Contractor : Salam Enterprises
Scope of work : Supply & Install of automatic sliding doors, Lead lined doors, Lead Lined doors for X-Ray rooms. Supply & Install of Door hardware for steel, wooden & aluminum doors.



HMC Port - Medical Centre



Aman Hospital

Project : Aman Hospital
Client : Nozul Real Estate
Consultant : KEO
Contractor : Medgulf Construction Company
Scope of work : Supply & Installation of Automatic
Sliding / Swing Door System, Manual
Sliding Wooden Door System &
Health Care Doors.



Aman Hospital



Al Fardan Medical

Project : Al Fardan Medical with North
western medicine

Client : Al Fardan

Consultant : HOSMAC

Contractor : Salam Enterprises

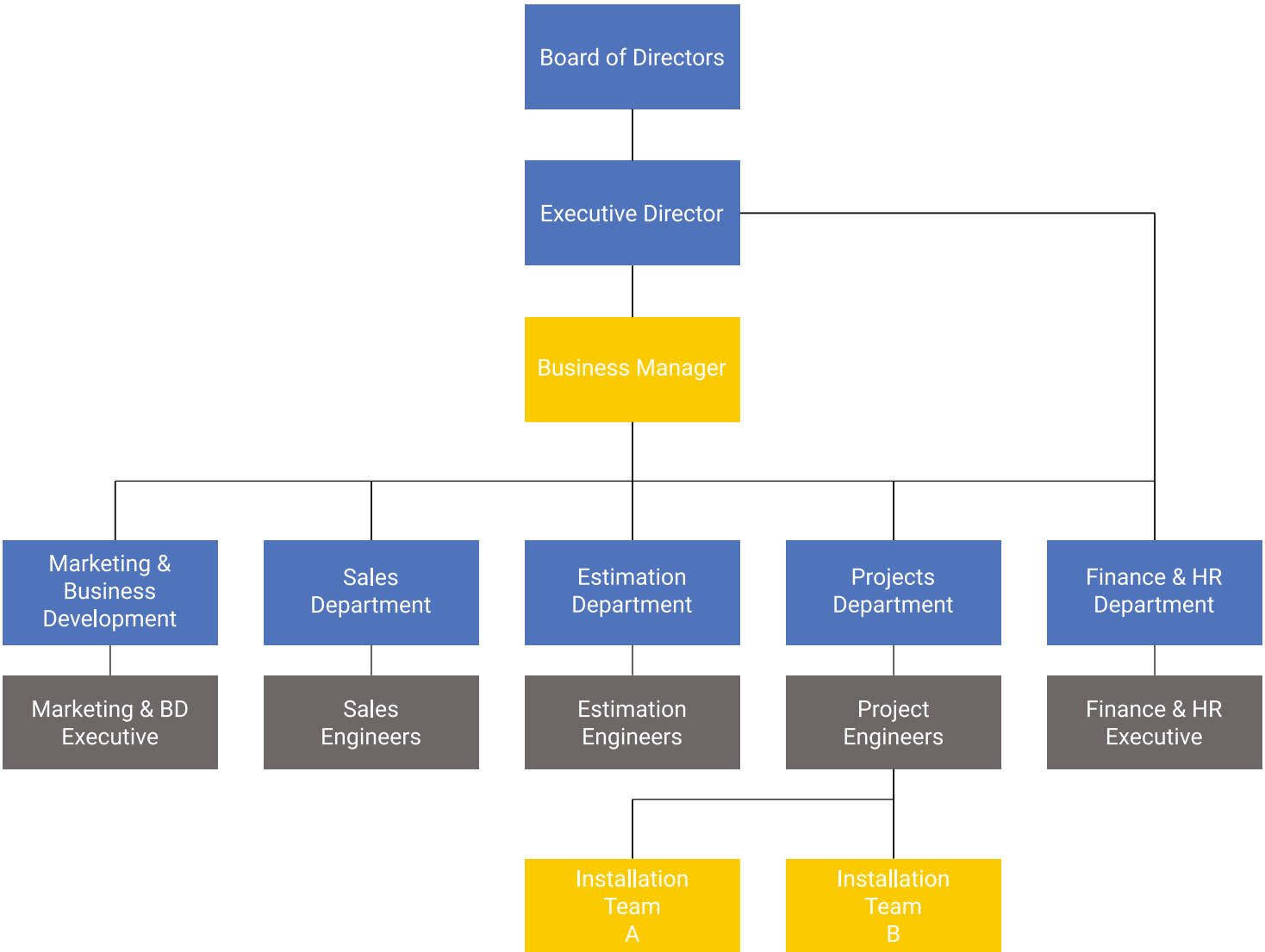
Scape of work : Supply & Install of Swing Door
System & Electromagnetic hold
open Hardware.



Al Fardan Medical with North Western Medicine



Organizational Chart



Trade License

2021/10/07
No 1 of 1

تاريخ الطباعة:
صفحة رقم:



Registration and Commercial
Licenses Department

وزارة التجارة والصناعة
Ministry of Commerce and Industry

إدارة التسجيل
والتراخيص التجارية

رخصة تجارية



رقم الرخصة: 159315
الاسم التجاري: سويدش اكسيس سولوشنس تريبينغ اند كونتراكتينغ شركة
نوع المنشأة التجارية: شركة
السمة التجارية: شركة
تاريخ اصدار الرخصة: 2018/10/07
تاريخ انتهاء الرخصة: 2022/10/01
رقم السجل التجاري: 119930

بيانات المدير المسؤول :

اسم المدير المسؤول: فيلاكاش مادهافان مادانان
رقم الإثبات: 25135600674

جنسية المدير المسؤول: الهند

نموذج ختم المنشأة التجارية :

تصنيف الموقع: تجاري
نوع الموقع: مكتب تجاري
المنطقة: 27 ام غويلينة
الشارع: الطريق الدائري الثالث
رقم الشارع: 230
عقار رقم: 40
رقم الدور/ الوحدة: 2
اسم مالك العقار: شركة علي بن خليفه الهتمي وشركاه دائمة
نوع الرخصة: بلدية الدوحة/ام غويلينة (مبنى 40 دور م. كتب 09 R)
وصف العنوان:

الأنشطة التجارية :

رقم النشاط	اسم النشاط	رقم النشاط	اسم النشاط
4100001	الانشاءات و المقاولات العامه	4752801	التجارة في مواد البناء



www.swedishaccess.com



Contact with us:



QATAR

MOB: +974 30361560
TEL: +974 4402 3039
FAX: +974 4431 9107
CR.NO.: 119930
P.O Box: 25422
Email: sales@swedishaccess.com



SWEDEN

TEL: +46 73 978 97 69
HASSELBY, STOCKHOLM

